

## GJC1 Antibody

Catalog No: #37497

Orders: [order@signalwayantibody.com](mailto:order@signalwayantibody.com)Support: [tech@signalwayantibody.com](mailto:tech@signalwayantibody.com)

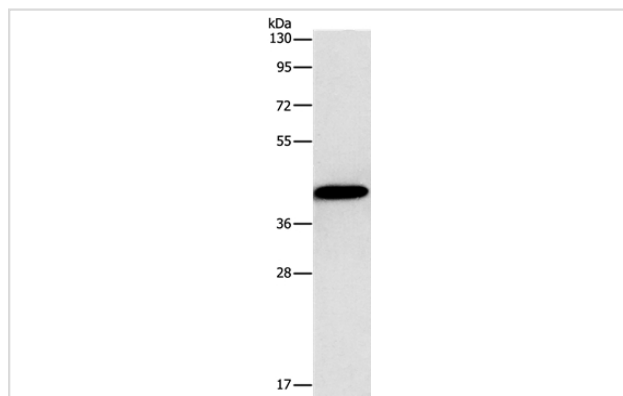
## Description

Product Name	GJC1 Antibody
Host Species	Rabbit
Clonality	Polyclonal
Purification	Antigen affinity purification.
Applications	WB
Species Reactivity	Hu
Specificity	The antibody detects endogenous levels of total GJC1 protein.
Immunogen Type	Peptide
Immunogen Description	Synthetic peptide corresponding to residues near the C terminal of human gap junction protein, gamma 1, 45kDa
Target Name	GJC1
Other Names	CX45; GJA7
Accession No.	Swiss-Prot#: P36383NCBI Gene ID: 10052Gene Accssion: NP_001073852
Uniprot	P36383
GeneID	10052;
SDS-PAGE MW	45kd
Concentration	2.5mg/ml
Formulation	Rabbit IgG in pH7.4 PBS, 0.05% NaN <sub>3</sub> , 40% Glycerol.
Storage	Store at -20°C

## Application Details

Western blotting: 1:1000-1:5000

## Images



Gel: 8%SDS-PAGE  
Lysate: 40ug MCF7 cell  
Primary antibody: 1/1250 dilution  
Secondary antibody dilution: 1/8000  
Exposure time: 5 seconds

## Background

This gene is a member of the connexin gene family. The encoded protein is a component of gap junctions, which are composed of arrays of

intercellular channels that provide a route for the diffusion of low molecular weight materials from cell to cell. Alternatively spliced transcript variants encoding the same isoform have been described.

---

Note: This product is for in vitro research use only