

CALCRL Antibody

Catalog No: #37509

Orders: order@signalwayantibody.comSupport: tech@signalwayantibody.com

Description

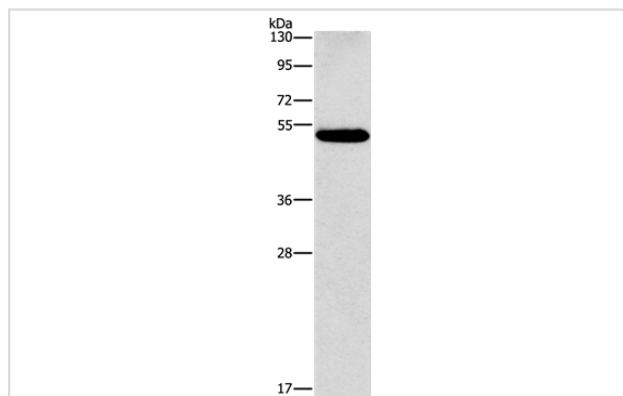
Product Name	CALCRL Antibody
Host Species	Rabbit
Clonality	Polyclonal
Purification	Antigen affinity purification.
Applications	WB IHC
Species Reactivity	Hu
Specificity	The antibody detects endogenous levels of total CALCRL protein.
Immunogen Type	Peptide
Immunogen Description	Synthetic peptide corresponding to a region derived from internal residues of human calcitonin receptor-like
Target Name	CALCRL
Other Names	CRLR; CGRPR
Accession No.	Swiss-Prot#: Q16602NCBI Gene ID: 10203Gene Accssion: NP_005786
Uniprot	Q16602
GeneID	10203;
SDS-PAGE MW	53kd
Concentration	2.7mg/ml
Formulation	Rabbit IgG in pH7.4 PBS, 0.05% NaN ₃ , 40% Glycerol.
Storage	Store at -20°C

Application Details

Western blotting: 1:500-1:2000

Immunohistochemistry: 1:50-1:200

Images



Gel: 8%SDS-PAGE

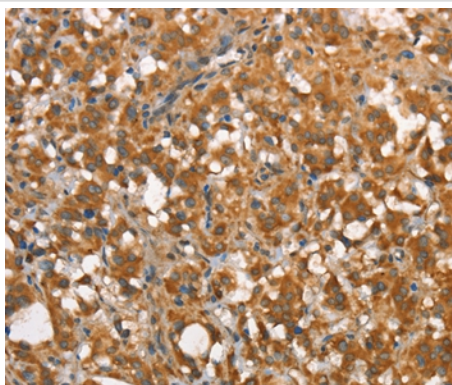
Lysates (from left to right): Human lung cancer tissue

Amount of lysate: 40ug per lane

Primary antibody: 1/550 dilution

Secondary antibody dilution: 1/8000

Exposure time: 40 seconds



Immunohistochemical analysis of paraffin-embedded Human thyroid cancer tissue using #37509 at dilution 1/40.

Background

Calcitonin receptor-like receptor (CALCRL), also known as the calcitonin receptor-like receptor (CRLR), is a human protein. The protein encoded by the CALCRL gene is a G protein-coupled receptor related to the calcitonin receptor. CALCRL is linked to one of three single transmembrane domain receptor activity-modifying proteins (RAMPs) that are essential for functional activity

Note: This product is for in vitro research use only