

CTAG1A/B Antibody

Catalog No: #37512

Orders: order@signalwayantibody.comSupport: tech@signalwayantibody.com

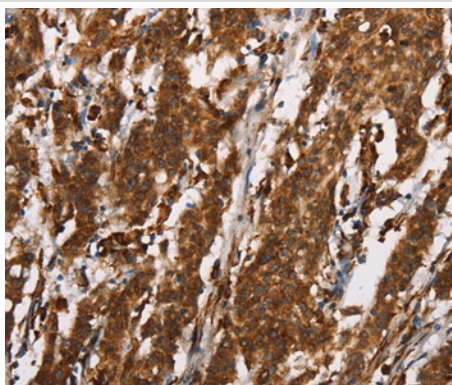
Description

Product Name	CTAG1A/B Antibody
Host Species	Rabbit
Clonality	Polyclonal
Purification	Antigen affinity purification.
Applications	IHC
Species Reactivity	Hu
Specificity	The antibody detects endogenous levels of total CTAG1A/B protein.
Immunogen Type	Peptide
Immunogen Description	Synthetic peptide corresponding to a region derived from internal residues of human Cancer/testis antigen 1
Target Name	CTAG1A-B
Other Names	CTAG; CTAG1; ESO1; LAGE2; LAGE2A/CTAG1B
Accession No.	Swiss-Prot#: P78358NCBI Gene ID: 246100/1485Gene Accssion: NP_640343/NP_001318
Uniprot	P78358
GeneID	1485;246100;
Concentration	1.8mg/ml
Formulation	Rabbit IgG in pH7.4 PBS, 0.05% NaN ₃ , 40% Glycerol.
Storage	Store at -20°C

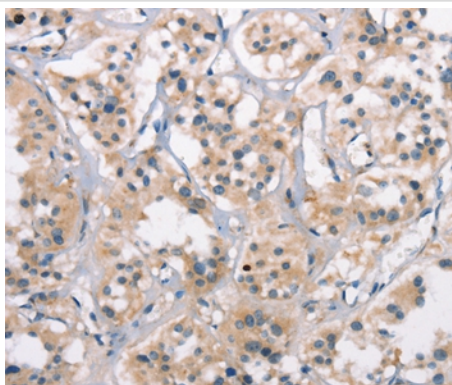
Application Details

Immunohistochemistry: 1:25-1:100

Images



Immunohistochemical analysis of paraffin-embedded Human gastric cancer tissue using #37512 at dilution 1/25.



Immunohistochemical analysis of paraffin-embedded Human thyroid cancer tissue using #37512 at dilution 1/25.

Background

The protein encoded by this gene is an antigen that is overexpressed in many cancers but that is also expressed in normal testis. This gene is found in a duplicated region of the X-chromosome and therefore has a neighboring gene of identical sequence. Expressed in testis and ovary and in a wide variety of cancers. Detected in uterine myometrium. Expressed from 18 weeks until birth in human fetal testis. In the adult testis, is strongly expressed in spermatogonia and in primary spermatocytes, but not in post-meiotic cells or in testicular somatic cells (at protein level).

Note: This product is for in vitro research use only