

CUL4B Antibody

Catalog No: #37513

Orders: order@signalwayantibody.comSupport: tech@signalwayantibody.com

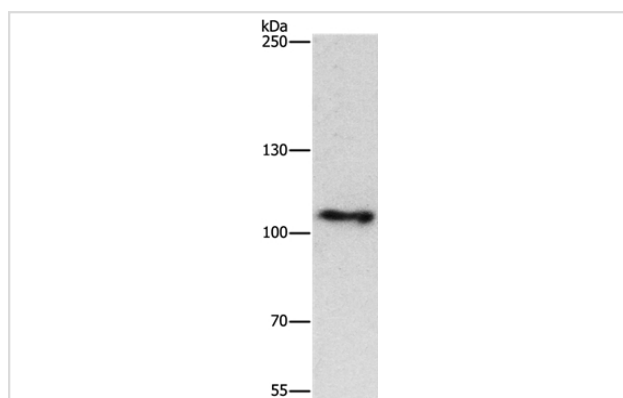
Description

Product Name	CUL4B Antibody
Host Species	Rabbit
Clonality	Polyclonal
Purification	Antigen affinity purification.
Applications	WB
Species Reactivity	Hu
Specificity	The antibody detects endogenous levels of total CUL4B protein.
Immunogen Type	Peptide
Immunogen Description	Synthetic peptide corresponding to a region derived from internal residues of human cullin 4B
Target Name	CUL4B
Other Names	SFM2; MRXSC; MRXHF2; MRXS15
Accession No.	Swiss-Prot#: Q13620NCBI Gene ID: 8450Gene Accssion: NP_001073341
Uniprot	Q13620
GeneID	8450;
SDS-PAGE MW	104kd
Concentration	2.7mg/ml
Formulation	Rabbit IgG in pH7.4 PBS, 0.05% NaN ₃ , 40% Glycerol.
Storage	Store at -20°C

Application Details

Western blotting: 1:200-1:1000

Images



Gel: 6%SDS-PAGE
Lysate: 40ug HepG2 cell
Primary antibody: 1/350 dilution
Secondary antibody dilution: 1/8000
Exposure time: 1 minute

Background

This gene is a member of the cullin family. The encoded protein forms a complex that functions as an E3 ubiquitin ligase and catalyzes the polyubiquitination of specific protein substrates in the cell. The protein interacts with a ring finger protein, and is required for the proteolysis of several

regulators of DNA replication including chromatin licensing and DNA replication factor 1 and cyclin E. Multiple transcript variants encoding different isoforms have been found for this gene.?

Note: This product is for in vitro research use only