

CYP46A1 Antibody

Catalog No: #37515

Orders: order@signalwayantibody.comSupport: tech@signalwayantibody.com

Description

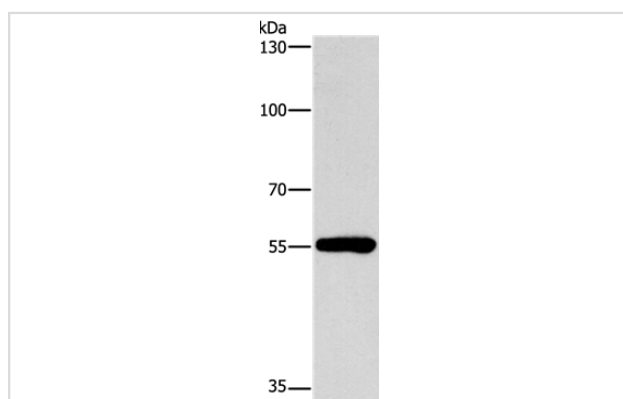
Product Name	CYP46A1 Antibody
Host Species	Rabbit
Clonality	Polyclonal
Purification	Antigen affinity purification.
Applications	WB IHC
Species Reactivity	Hu
Specificity	The antibody detects endogenous levels of total CYP46A1 protein.
Immunogen Type	Peptide
Immunogen Description	Synthetic peptide corresponding to a region derived from internal residues of human cytochrome P450, family 46, subfamily A, polypeptide 1
Target Name	CYP46A1
Other Names	CP46; CYP46
Accession No.	Swiss-Prot#: Q9Y6A2NCBI Gene ID: 10858Gene Accssion: NP_006659
Uniprot	Q9Y6A2
GeneID	10858;
SDS-PAGE MW	57kd
Concentration	1.1mg/ml
Formulation	Rabbit IgG in pH7.4 PBS, 0.05% NaN ₃ , 40% Glycerol.
Storage	Store at -20°C

Application Details

Western blotting: 1:200-1:1000

Immunohistochemistry: 1:25-1:100

Images



Gel: 8%SDS-PAGE

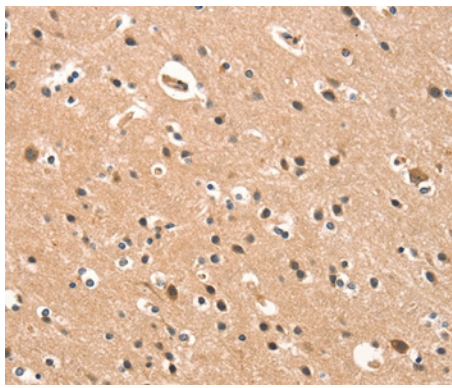
Lysates (from left to right): Human lymphoma tissue

Amount of lysate: 40ug per lane

Primary antibody: 1/200 dilution

Secondary antibody dilution: 1/8000

Exposure time: 1 minute



Immunohistochemical analysis of paraffin-embedded Human brain tissue using #37515 at dilution 1/15.

Background

This gene encodes a member of the cytochrome P450 superfamily of enzymes. The cytochrome P450 proteins are monooxygenases which catalyze many reactions involved in drug metabolism and synthesis of cholesterol, steroids and other lipids. This endoplasmic reticulum protein is expressed in the brain, where it converts cholesterol to 24S-hydroxycholesterol. While cholesterol cannot pass the blood-brain barrier, 24S-hydroxycholesterol can be secreted in the brain into the circulation to be returned to the liver for catabolism.?

Note: This product is for in vitro research use only