

## CSTB Antibody

Catalog No: #37516

Orders: [order@signalwayantibody.com](mailto:order@signalwayantibody.com)Support: [tech@signalwayantibody.com](mailto:tech@signalwayantibody.com)

## Description

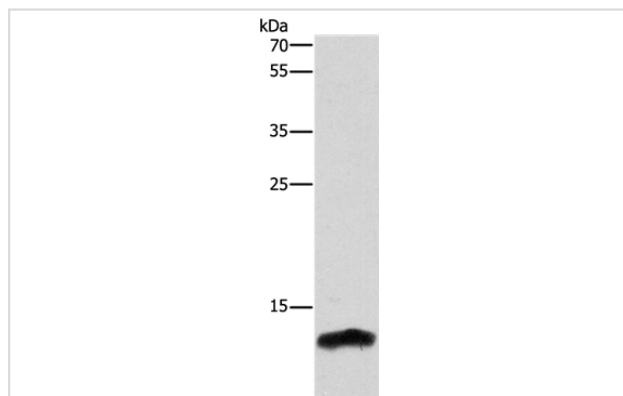
Product Name	CSTB Antibody
Host Species	Rabbit
Clonality	Polyclonal
Purification	Antigen affinity purification.
Applications	WB IHC
Species Reactivity	Hu Ms
Specificity	The antibody detects endogenous levels of total CSTB protein.
Immunogen Type	Peptide
Immunogen Description	Synthetic peptide corresponding to a region derived from internal residues of human cystatin B (stefin B)
Target Name	CSTB
Other Names	PME; ULD; CST6; EPM1; STFB; EPM1A
Accession No.	Swiss-Prot#: P04080NCBI Gene ID: 1476Gene Accssion: NP_000091
Uniprot	P04080
GeneID	1476;
SDS-PAGE MW	11kd
Concentration	2.2mg/ml
Formulation	Rabbit IgG in pH7.4 PBS, 0.05% NaN <sub>3</sub> , 40% Glycerol.
Storage	Store at -20°C

## Application Details

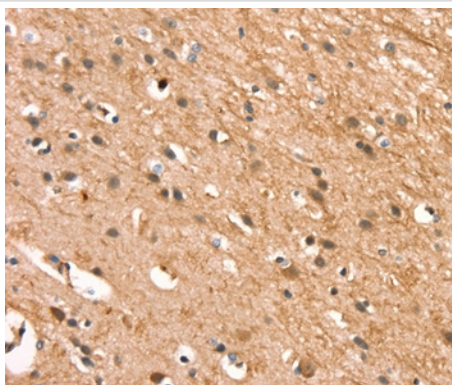
Western blotting: 1:200-1:1000

Immunohistochemistry: 1:25-1:100

## Images



Gel: 12+10%SDS-PAGE  
Lysates (from left to right): Mouse spleen tissue  
Amount of lysate: 40ug per lane  
Primary antibody: 1/300 dilution  
Secondary antibody dilution: 1/8000  
Exposure time: 2.5 minutes



Immunohistochemical analysis of paraffin-embedded Human brain tissue using #37516 at dilution 1/30.

## Background

The cystatin superfamily encompasses proteins that contain multiple cystatin-like sequences. Some of the members are active cysteine protease inhibitors, while others have lost or perhaps never acquired this inhibitory activity. There are three inhibitory families in the superfamily, including the type 1 cystatins (stefins), type 2 cystatins and kininogens. This gene encodes a stefin that functions as an intracellular thiol protease inhibitor. The protein is able to form a dimer stabilized by noncovalent forces, inhibiting papain and cathepsins I, h and b. The protein is thought to play a role in protecting against the proteases leaking from lysosomes.

Note: This product is for in vitro research use only