

DHH Antibody

Catalog No: #37533

Orders: order@signalwayantibody.comSupport: tech@signalwayantibody.com

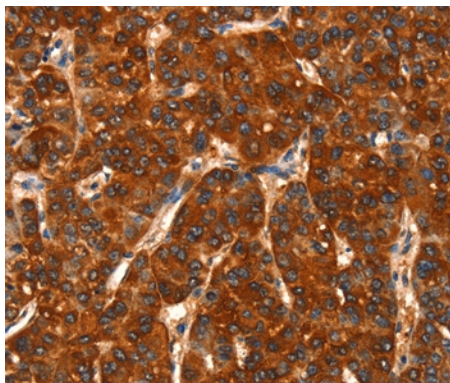
Description

Product Name	DHH Antibody
Host Species	Rabbit
Clonality	Polyclonal
Purification	Antigen affinity purification.
Applications	IHC
Species Reactivity	Hu
Specificity	The antibody detects endogenous levels of total DHH protein.
Immunogen Type	Peptide
Immunogen Description	Synthetic peptide corresponding to a region derived from internal residues of human desert hedgehog
Target Name	DHH
Other Names	GDXYM; HHG-3; SRXY7
Accession No.	Swiss-Prot#: O43323NCBI Gene ID: 50846Gene Accssion: NP_066382
Uniprot	O43323
GeneID	50846;
Concentration	3.4mg/ml
Formulation	Rabbit IgG in pH7.4 PBS, 0.05% NaN ₃ , 40% Glycerol.
Storage	Store at -20°C

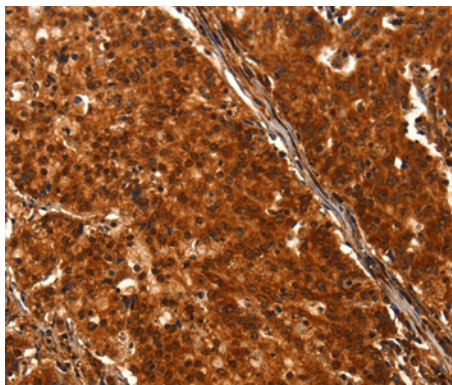
Application Details

Immunohistochemistry: 1:50-1:200

Images



Immunohistochemical analysis of paraffin-embedded Human liver cancer tissue using #37533 at dilution 1/25.



Immunohistochemical analysis of paraffin-embedded Human gastric cancer tissue using #37533 at dilution 1/25.

Background

This gene encodes a member of the hedgehog family. The hedgehog gene family encodes signaling molecules that play an important role in regulating morphogenesis. This protein is predicted to be made as a precursor that is autocatalytically cleaved; the N-terminal portion is soluble and contains the signalling activity while the C-terminal portion is involved in precursor processing. More importantly, the C-terminal product covalently attaches a cholesterol moiety to the N-terminal product, restricting the N-terminal product to the cell surface and preventing it from freely diffusing throughout the organism. Defects in this protein have been associated with partial gonadal dysgenesis (PGD) accompanied by minifascicular polyneuropathy. This protein may be involved in both male gonadal differentiation and perineurial development.

Note: This product is for in vitro research use only