

AGO1 Antibody

Catalog No: #37543

Orders: order@signalwayantibody.comSupport: tech@signalwayantibody.com

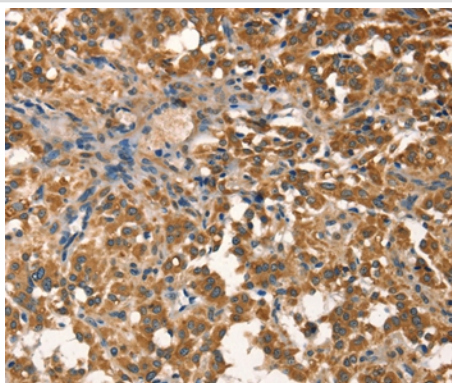
Description

Product Name	AGO1 Antibody
Host Species	Rabbit
Clonality	Polyclonal
Purification	Antigen affinity purification.
Applications	IHC
Species Reactivity	Hu Ms
Specificity	The antibody detects endogenous levels of total AGO1 protein.
Immunogen Type	Peptide
Immunogen Description	Synthetic peptide corresponding to a region derived from internal residues of human argonaute RISC catalytic component 1
Target Name	AGO1
Other Names	Q99; EIF2C; EIF2C1; GERP95
Accession No.	Swiss-Prot#: Q9UL18NCBI Gene ID: 26523Gene Accssion: NP_036331
Uniprot	Q9UL18
GeneID	26523;
Concentration	2.6mg/ml
Formulation	Rabbit IgG in pH7.4 PBS, 0.05% NaN ₃ , 40% Glycerol.
Storage	Store at -20°C

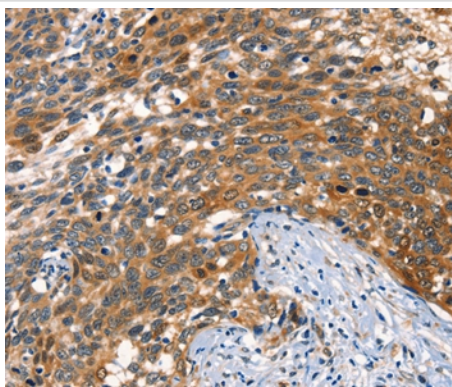
Application Details

Immunohistochemistry: 1:50-1:200

Images



Immunohistochemical analysis of paraffin-embedded Human thyroid cancer tissue using #37543 at dilution 1/40.



Immunohistochemical analysis of paraffin-embedded Human cervical cancer tissue using #37543 at dilution 1/40.

Background

This gene encodes a member of the Argonaute family of proteins which play a role in RNA interference. The encoded protein is highly basic, and contains a PAZ domain and a PIWI domain. It may interact with dicer1 and play a role in short-interfering-RNA-mediated gene silencing. This gene is located on chromosome 1 in a cluster of closely related family members including argonaute 3, and argonaute 4.

Note: This product is for in vitro research use only