

TDP2 Antibody

Catalog No: #37559

Orders: order@signalwayantibody.comSupport: tech@signalwayantibody.com

Description

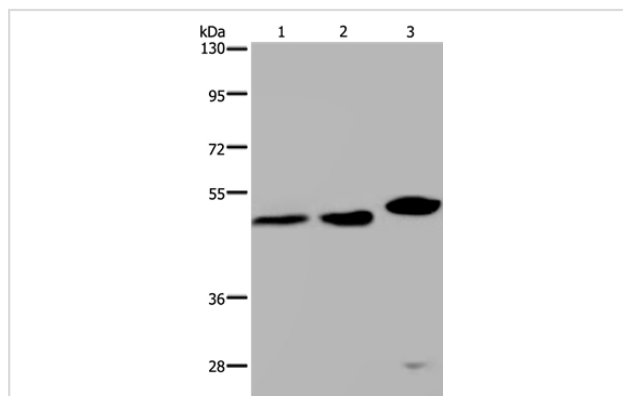
Product Name	TDP2 Antibody
Host Species	Rabbit
Clonality	Polyclonal
Purification	Antigen affinity purification.
Applications	WB IHC
Species Reactivity	Hu Ms
Specificity	The antibody detects endogenous levels of total TDP2 protein.
Immunogen Type	Peptide
Immunogen Description	Synthetic peptide corresponding to a region derived from internal residues of human tyrosyl-DNA phosphodiesterase 2
Target Name	TDP2
Other Names	EAP2; AD022; EAPII; TTRAP; hTDP2; dJ30M3.3
Accession No.	Swiss-Prot#: O95551NCBI Gene ID: 51567Gene Accssion: NP_057698
Uniprot	O95551
GeneID	51567;
SDS-PAGE MW	41kd
Concentration	2.6mg/ml
Formulation	Rabbit IgG in pH7.4 PBS, 0.05% NaN ₃ , 40% Glycerol.
Storage	Store at -20°C

Application Details

Western blotting: 1:200-1:1000

Immunohistochemistry: 1:50-1:200

Images



Gel: 8%SDS-PAGE

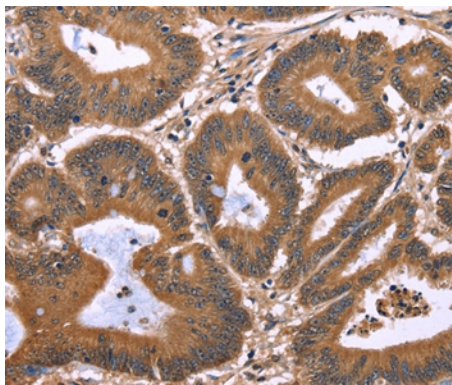
Lysates (from left to right): HeLa and 293T cell, mouse liver tissue

Amount of lysate: 40ug per lane

Primary antibody: 1/200 dilution

Secondary antibody dilution: 1/8000

Exposure time: 6 minutes



Immunohistochemical analysis of paraffin-embedded Human colon cancer tissue using #37559 at dilution 1/40.

Background

This gene encodes a member of a superfamily of divalent cation-dependent phosphodiesterases. The encoded protein associates with CD40, tumor necrosis factor (TNF) receptor-75 and TNF receptor associated factors (TRAFs), and inhibits nuclear factor-kappa-B activation. This protein has sequence and structural similarities with APE1 endonuclease, which is involved in both DNA repair and the activation of transcription factors.

Note: This product is for in vitro research use only