

FBXO31 Antibody

Catalog No: #37567

Orders: order@signalwayantibody.comSupport: tech@signalwayantibody.com

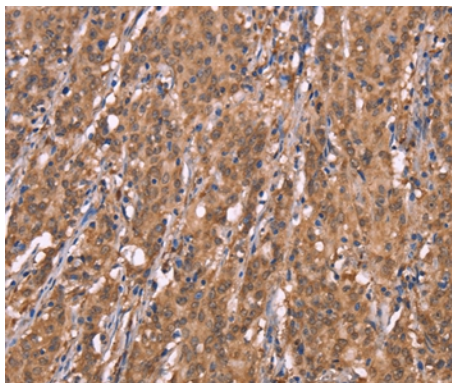
Description

Product Name	FBXO31 Antibody
Host Species	Rabbit
Clonality	Polyclonal
Purification	Antigen affinity purification.
Applications	IHC
Species Reactivity	Hu
Specificity	The antibody detects endogenous levels of total FBXO31 protein.
Immunogen Type	Peptide
Immunogen Description	Synthetic peptide corresponding to residues near the C terminal of human F-box protein 31
Target Name	FBXO31
Other Names	FBX14; Fbx31; FBXO14; pp2386
Accession No.	Swiss-Prot#: Q5XUX0NCBI Gene ID: 79791Gene Accssion: NP_079011
Uniprot	Q5XUX0
GeneID	79791;
Concentration	2.8mg/ml
Formulation	Rabbit IgG in pH7.4 PBS, 0.05% NaN ₃ , 40% Glycerol.
Storage	Store at -20°C

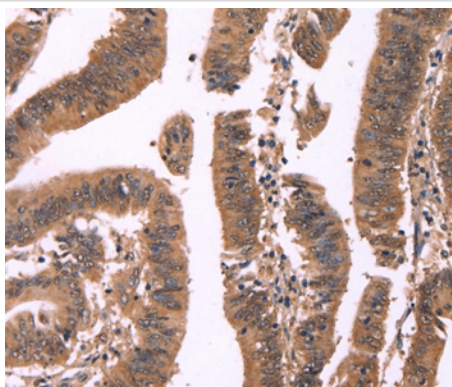
Application Details

Immunohistochemistry: 1:50-1:200

Images



Immunohistochemical analysis of paraffin-embedded Human gastric cancer tissue using #37567 at dilution 1/40.



Immunohistochemical analysis of paraffin-embedded Human colon cancer tissue using #37567 at dilution 1/40.

Background

This gene is a member of the F-box family. Members are classified into three classes according to the substrate interaction domain, FBW for WD40 repeats, FBL for leucine-rich repeats, and FBXO for other domains. This protein, classified into the last category because of the lack of a recognizable substrate binding domain, has been proposed to be a component of the SCF ubiquitination complex. It is thought to bind and recruit substrate for ubiquitination and degradation. This protein may have a role in regulating the cell cycle as well as dendrite growth and neuronal migration. Alternative splicing results in multiple transcript variants.

Note: This product is for in vitro research use only