

FEM1B Antibody

Catalog No: #37569

Orders: order@signalwayantibody.comSupport: tech@signalwayantibody.com

Description

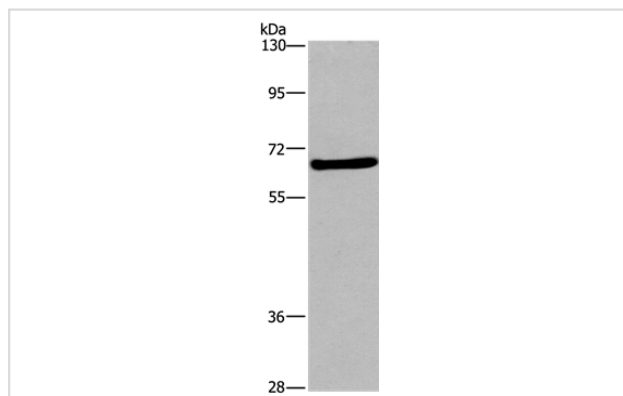
| | |
|-----------------------|---|
| Product Name | FEM1B Antibody |
| Host Species | Rabbit |
| Clonality | Polyclonal |
| Purification | Antigen affinity purification. |
| Applications | WB IHC |
| Species Reactivity | Hu Ms Rt |
| Specificity | The antibody detects endogenous levels of total FEM1B protein. |
| Immunogen Type | Peptide |
| Immunogen Description | Synthetic peptide corresponding to residues near the C terminal of human fem-1 homolog b (C. elegans) |
| Target Name | FEM1B |
| Other Names | F1AA; F1A-ALPHA; FEM1-beta |
| Accession No. | Swiss-Prot#: Q9UK73NCBI Gene ID: 10116Gene Accssion: NP_056137 |
| Uniprot | Q9UK73 |
| GeneID | 10116; |
| SDS-PAGE MW | 70kd |
| Concentration | 1.6mg/ml |
| Formulation | Rabbit IgG in pH7.4 PBS, 0.05% NaN ₃ , 40% Glycerol. |
| Storage | Store at -20°C |

Application Details

Western blotting: 1:500-1:2000

Immunohistochemistry: 1:25-1:100

Images



Gel: 6%SDS-PAGE

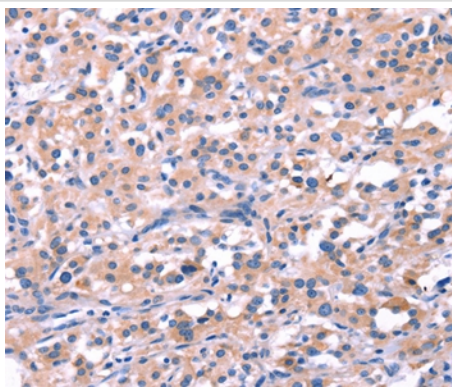
Lysates (from left to right): PC3

Amount of lysate: 40ug per lane

Primary antibody: 1/200 dilution

Secondary antibody dilution: 1/8000

Exposure time: 10 seconds



Immunohistochemical analysis of paraffin-embedded Human thyroid cancer tissue using #37569 at dilution 1/20.

Background

This gene encodes an ankyrin repeat protein that belongs to the death receptor-associated family of proteins and plays a role in mediating apoptosis. The encoded protein is also thought to function in the replication stress-induced checkpoint signaling pathway via interaction with checkpoint kinase 1

Note: This product is for in vitro research use only