

FEM1A Antibody

Catalog No: #37570

Orders: order@signalwayantibody.comSupport: tech@signalwayantibody.com

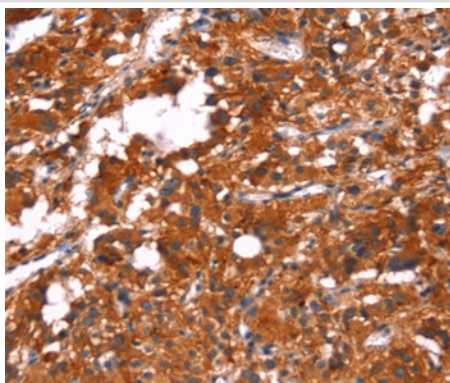
Description

Product Name	FEM1A Antibody
Host Species	Rabbit
Clonality	Polyclonal
Purification	Antigen affinity purification.
Applications	IHC
Species Reactivity	Hu
Specificity	The antibody detects endogenous levels of total FEM1A protein.
Immunogen Type	Peptide
Immunogen Description	Synthetic peptide corresponding to a region derived from internal residues of human fem-1 homolog a (C. elegans)
Target Name	FEM1A
Other Names	EPRAP
Accession No.	Swiss-Prot#: Q9BSK4NCBI Gene ID: 55527Gene Accssion: NP_061178
Uniprot	Q9BSK4
GeneID	55527;
Concentration	2.1mg/ml
Formulation	Rabbit IgG in pH7.4 PBS, 0.05% NaN ₃ , 40% Glycerol.
Storage	Store at -20°C

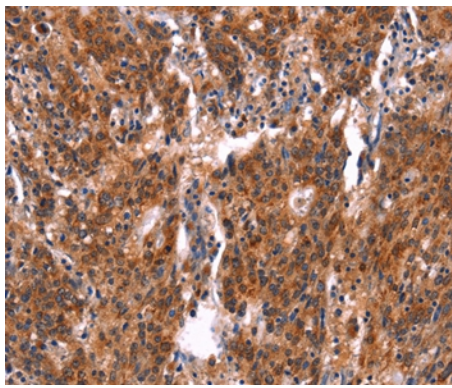
Application Details

Immunohistochemistry: 1:25-1:100

Images



Immunohistochemical analysis of paraffin-embedded Human thyroid cancer tissue using #37570 at dilution 1/20.



Immunohistochemical analysis of paraffin-embedded Human gastric cancer tissue using #37570 at dilution 1/20.

Background

FEM1A (FEM-1 homolog a), also known as EPRAP (Prostaglandin E receptor 4-associated protein), is a 669 amino acid cytoplasmic protein that belongs to the FEM-1 family. FEM1A is present in atheromata and in macrophages derived from peripheral blood monocytes. FEM1A may be a component of an E3 ubiquitin-protein ligase complex and functions as a substrate recognition subunit. It is suggested that FEM1A participates in anti-inflammatory signaling of macrophages via its interaction with EP4. FEM1A is down-regulated in Rhabdomyosarcoma, the most common soft tissue neoplasm of children. FEM1A is considered a candidate gene for polycystic ovary syndrome.

Note: This product is for in vitro research use only