

FGF16 Antibody

Catalog No: #37571

Orders: order@signalwayantibody.comSupport: tech@signalwayantibody.com

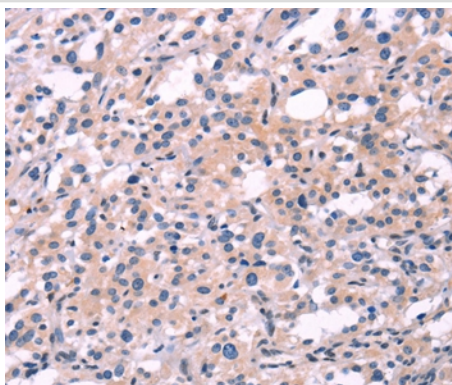
Description

Product Name	FGF16 Antibody
Host Species	Rabbit
Clonality	Polyclonal
Purification	Antigen affinity purification.
Applications	IHC
Species Reactivity	Hu Ms Rt
Specificity	The antibody detects endogenous levels of total FGF16 protein.
Immunogen Type	Peptide
Immunogen Description	Synthetic peptide corresponding to a region derived from internal residues of human fibroblast growth factor 16
Target Name	FGF16
Other Names	MF4; FGF-16
Accession No.	Swiss-Prot#: O43320NCBI Gene ID: 8823Gene Accssion: NP_003859
Uniprot	O43320
GeneID	8823;
Concentration	2.5mg/ml
Formulation	Rabbit IgG in pH7.4 PBS, 0.05% NaN ₃ , 40% Glycerol.
Storage	Store at -20°C

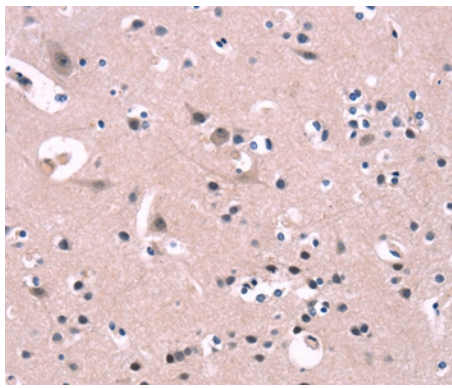
Application Details

Immunohistochemistry: 1:25-1:100

Images



Immunohistochemical analysis of paraffin-embedded Human thyroid cancer tissue using #37571 at dilution 1/30.



Immunohistochemical analysis of paraffin-embedded Human brain tissue using #37571 at dilution 1/30.

Background

The protein encoded by this gene is a member of the fibroblast growth factor (FGF) family. FGF family members possess broad mitogenic and cell survival activities, and are involved in a variety of biological processes, including embryonic development, cell growth, morphogenesis, tissue repair, tumor growth and invasion. The rat homolog is predominantly expressed in embryonic brown adipose tissue and has significant mitogenic activity, which suggests a role in proliferation of embryonic brown adipose tissue.

Note: This product is for in vitro research use only