

## FGF22 Antibody

Catalog No: #37572

Orders: [order@signalwayantibody.com](mailto:order@signalwayantibody.com)Support: [tech@signalwayantibody.com](mailto:tech@signalwayantibody.com)

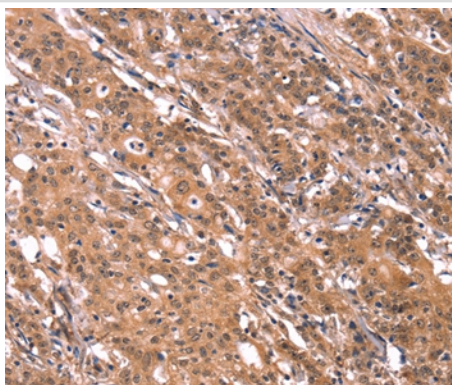
## Description

Product Name	FGF22 Antibody
Host Species	Rabbit
Clonality	Polyclonal
Purification	Antigen affinity purification.
Applications	IHC
Species Reactivity	Hu Ms
Specificity	The antibody detects endogenous levels of total FGF22 protein.
Immunogen Type	Peptide
Immunogen Description	Synthetic peptide corresponding to a region derived from internal residues of human fibroblast growth factor 22
Target Name	FGF22
Other Names	FGF-22
Accession No.	Swiss-Prot#: Q9HCT0NCBI Gene ID: 27006Gene Accssion: NP_065688
Uniprot	Q9HCT0
GeneID	27006;
Concentration	2.7mg/ml
Formulation	Rabbit IgG in pH7.4 PBS, 0.05% NaN <sub>3</sub> , 40% Glycerol.
Storage	Store at -20°C

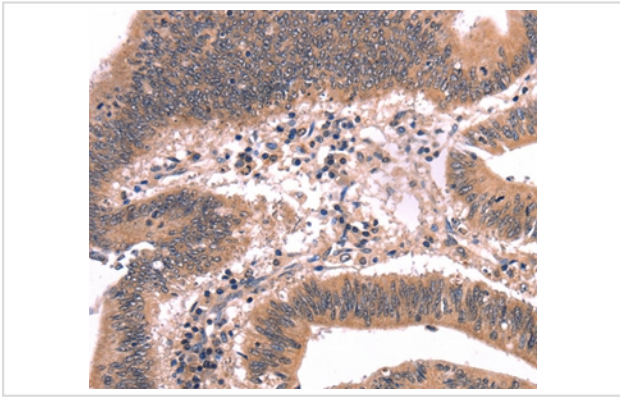
## Application Details

Immunohistochemistry: 1:25-1:100

## Images



Immunohistochemical analysis of paraffin-embedded Human gastric cancer tissue using #37572 at dilution 1/20.



Immunohistochemical analysis of paraffin-embedded Human colon cancer tissue using #37572 at dilution 1/20.

## Background

The protein encoded by this gene is a member of the fibroblast growth factor (FGF) family. FGF family members possess broad mitogenic and cell survival activities and are involved in a variety of biological processes including embryonic development, cell growth, morphogenesis, tissue repair, tumor growth and invasion. The mouse homolog of this gene was found to be preferentially expressed in the inner root sheath of the hair follicle, which suggested a role in hair development.?

Note: This product is for in vitro research use only