

GCSAM Antibody

Catalog No: #37588

Orders: order@signalwayantibody.comSupport: tech@signalwayantibody.com

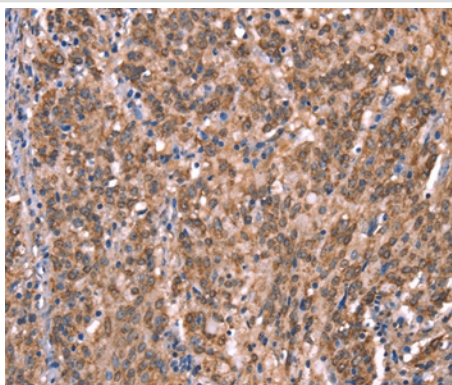
Description

Product Name	GCSAM Antibody
Host Species	Rabbit
Clonality	Polyclonal
Purification	Antigen affinity purification.
Applications	IHC
Species Reactivity	Hu
Specificity	The antibody detects endogenous levels of total GCSAM protein.
Immunogen Type	Peptide
Immunogen Description	Synthetic peptide corresponding to a region derived from internal residues of human germinal center-associated, signaling and motility
Target Name	GCSAM
Other Names	HGAL; GCAT2; GCET2
Accession No.	Swiss-Prot#: Q8N6F7NCBI Gene ID: 257144Gene Accssion: NP_689998
Uniprot	Q8N6F7
GeneID	257144;
Concentration	2.7mg/ml
Formulation	Rabbit IgG in pH7.4 PBS, 0.05% NaN ₃ , 40% Glycerol.
Storage	Store at -20°C

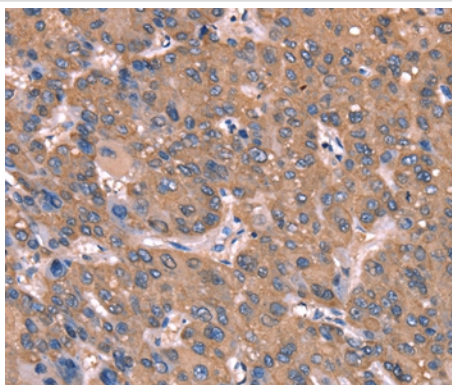
Application Details

Immunohistochemistry: 1:50-1:200

Images



Immunohistochemical analysis of paraffin-embedded Human gastric cancer tissue using #37588 at dilution 1/40.



Immunohistochemical analysis of paraffin-embedded Human liver cancer tissue using #37588 at dilution 1/40.

Background

This gene encodes a protein which may function in signal transduction pathways and whose expression is elevated in germinal cell lymphomas. It contains a putative PDZ-interacting domain, an immunoreceptor tyrosine-based activation motif (ITAM), and two putative SH2 binding sites. In B cells, its expression is specifically induced by interleukin-4. Alternative splicing results in multiple transcript variants encoding different isoforms.?

Note: This product is for in vitro research use only