

## GLMN Antibody

Catalog No: #37595

Orders: [order@signalwayantibody.com](mailto:order@signalwayantibody.com)Support: [tech@signalwayantibody.com](mailto:tech@signalwayantibody.com)

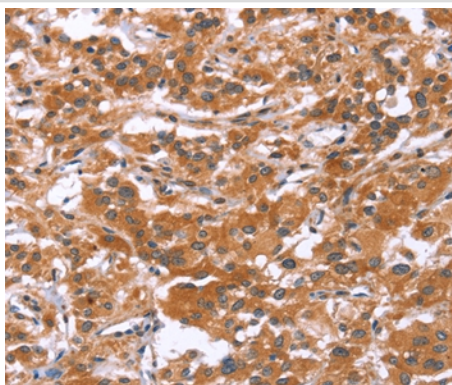
## Description

Product Name	GLMN Antibody
Host Species	Rabbit
Clonality	Polyclonal
Purification	Antigen affinity purification.
Applications	IHC
Species Reactivity	Hu
Specificity	The antibody detects endogenous levels of total GLMN protein.
Immunogen Type	Peptide
Immunogen Description	Synthetic peptide corresponding to a region derived from internal residues of human glomulin, FKBP associated protein
Target Name	GLMN
Other Names	FAP; GVM; GLML; FAP48; FAP68; FKBPAP; VMGLOM
Accession No.	Swiss-Prot#: Q92990NCBI Gene ID: 11146Gene Accssion: NP_444504
Uniprot	Q92990
GeneID	11146;
Concentration	1.9mg/ml
Formulation	Rabbit IgG in pH7.4 PBS, 0.05% NaN <sub>3</sub> , 40% Glycerol.
Storage	Store at -20°C

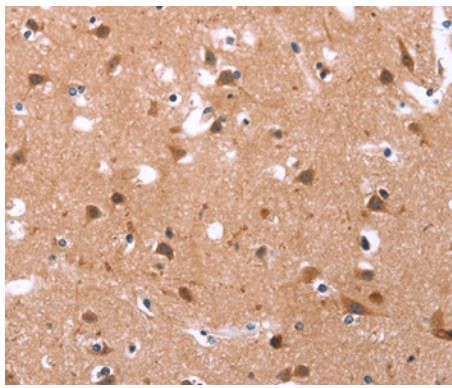
## Application Details

Immunohistochemistry: 1:25-1:100

## Images



Immunohistochemical analysis of paraffin-embedded Human thyroid cancer tissue using #37595 at dilution 1/30.



Immunohistochemical analysis of paraffin-embedded Human brain tissue using #37595 at dilution 1/30.

## Background

This gene encodes a phosphorylated protein that is a member of a Skp1-Cullin-F-box-like complex. The protein is essential for normal development of the vasculature and mutations in this gene have been associated with glomuvenous malformations, also called glomangiomas. Alternatively spliced variants that encode different protein isoforms have been described but the full-length nature of only one has been determined.

Note: This product is for in vitro research use only