

GPER1 Rabbit mAb

Catalog No: #37606



Orders: order@signalwayantibody.com
Support: tech@signalwayantibody.com

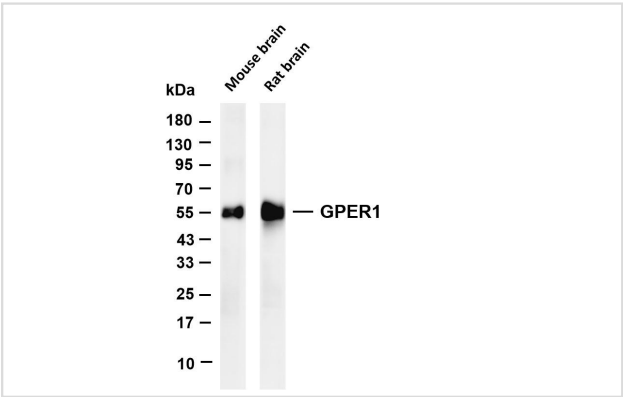
Description

Product Name	GPER1 Rabbit mAb
Host Species	Rabbit
Clonality	Monoclonal
Purification	Protein A
Applications	WB;IHC;IF;IP
Species Reactivity	Human; Mouse; Rat
Specificity	The antibody detects endogenous levels of total GPER1 protein.
Immunogen Type	Peptide
Target Name	GPER1
Other Names	CEPR; GPER; DRY12; FEG-1; GPR30; LERGU; LyGPR; CMKRL2; LERGU2; GPCR-Br
Accession No.	Swiss-Prot#: Q99527NCBI Gene ID: 2852Gene Accssion: NP_001496
Uniprot	Q99527
GeneID	2852;
SDS-PAGE MW	55kDa
Formulation	PBS, 50% glycerol, 0.05% Proclin 300, 0.05%BSA
Storage	Store at -20°C

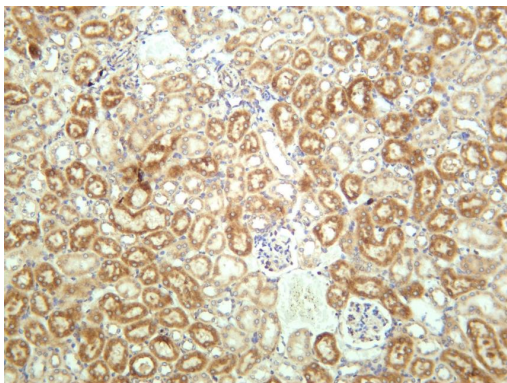
Application Details

IHC 1:1000-1:5000;
WB 1:2000-1:10000;
IF 1:200-1:1000;
IP 1:50-1:200;

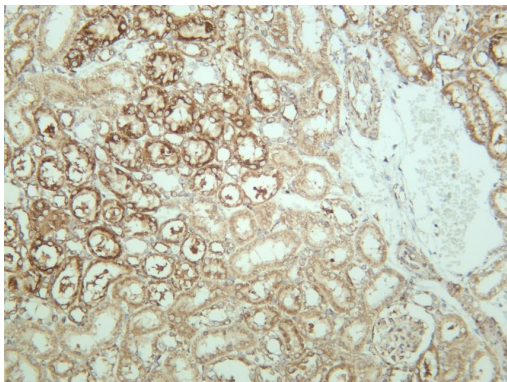
Images



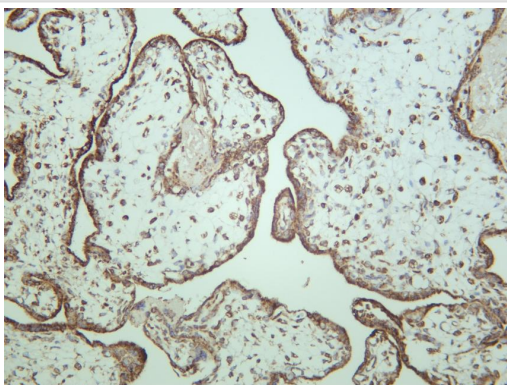
Various whole cell lysates were separated by 4-20% SDS-PAGE, and the membrane was blotted with GPER1 antibody.
Lane 1: Mouse brain Lane 2: Rat brain
Predicted band size: 42kDa Observed band size: 55kDa



Mouse kidney was stained with GPER1 antibody



Rat kidney was stained with GPER1 antibody



Human placenta was stained with GPER1 antibody

Background

This gene is a member of the G-protein coupled receptor 1 family and encodes a multi-pass membrane protein that localizes to the endoplasmic reticulum. The protein binds estrogen, resulting in intracellular calcium mobilization and synthesis of phosphatidylinositol 3,4,5-trisphosphate in the nucleus. This protein therefore plays a role in the rapid nongenomic signaling events widely observed following stimulation of cells and tissues with estrogen. Alternate transcriptional splice variants which encode the same protein have been characterized.

Note: This product is for in vitro research use only