

HRG Antibody

Catalog No: #37628

Orders: order@signalwayantibody.comSupport: tech@signalwayantibody.com

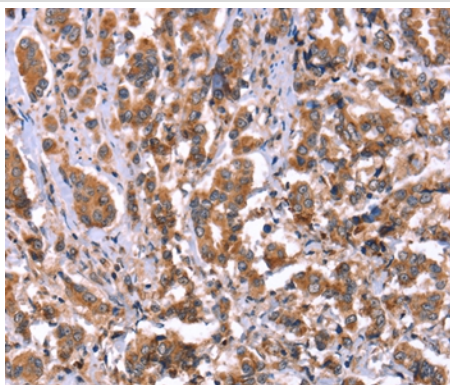
Description

| | |
|-----------------------|-----------------------------------------------------------------------------------------------------------------|
| Product Name | HRG Antibody |
| Host Species | Rabbit |
| Clonality | Polyclonal |
| Purification | Antigen affinity purification. |
| Applications | IHC |
| Species Reactivity | Hu |
| Specificity | The antibody detects endogenous levels of total HRG protein. |
| Immunogen Type | Peptide |
| Immunogen Description | Synthetic peptide corresponding to a region derived from internal residues of human histidine-rich glycoprotein |
| Target Name | HRG |
| Other Names | HPRG; HRGP; THPH11 |
| Accession No. | Swiss-Prot#: P04196NCBI Gene ID: 3273Gene Accssion: NP_000403 |
| Uniprot | P04196 |
| GeneID | 3273; |
| Concentration | 3.4mg/ml |
| Formulation | Rabbit IgG in pH7.4 PBS, 0.05% NaN ₃ , 40% Glycerol. |
| Storage | Store at -20°C |

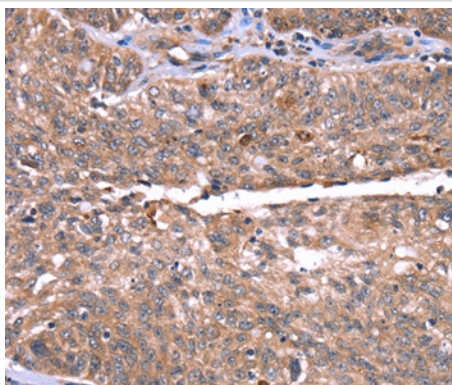
Application Details

Immunohistochemistry: 1:50-1:200

Images



Immunohistochemical analysis of paraffin-embedded Human breast cancer tissue using #37628 at dilution 1/50.



Immunohistochemical analysis of paraffin-embedded Human ovarian cancer tissue using #37628 at dilution 1/50.

Background

This histidine-rich glycoprotein contains two cystatin-like domains and is located in plasma and platelets. The physiological function has not been determined but it is known that the protein binds heme, dyes and divalent metal ions. It can inhibit rosette formation and interacts with heparin, thrombospondin and plasminogen. Two of the protein's effects, the inhibition of fibrinolysis and the reduction of inhibition of coagulation, indicate a potential prothrombotic effect. Mutations in this gene lead to thrombophilia due to abnormal histidine-rich glycoprotein levels.

Note: This product is for in vitro research use only