

ID3 Antibody

Catalog No: #37640

Orders: order@signalwayantibody.comSupport: tech@signalwayantibody.com

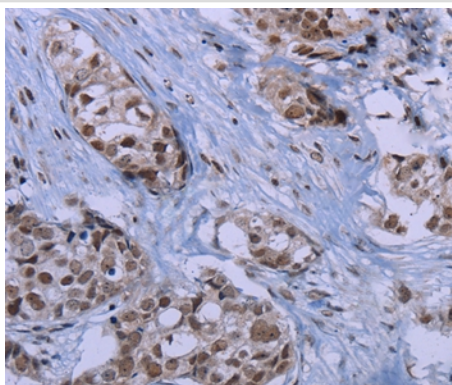
Description

Product Name	ID3 Antibody
Host Species	Rabbit
Clonality	Polyclonal
Purification	Antigen affinity purification.
Applications	IHC
Species Reactivity	Hu Ms Rt
Specificity	The antibody detects endogenous levels of total ID3 protein.
Immunogen Type	Peptide
Immunogen Description	Synthetic peptide corresponding to residues near the N terminal of human inhibitor of DNA binding 3, dominant negative helix-loop-helix protein
Target Name	ID3
Other Names	HEIR-1; bHLHb25
Accession No.	Swiss-Prot#: Q02535NCBI Gene ID: 3399Gene Accssion: NP_002158/Q02535
Uniprot	Q02535
GeneID	3399;
Concentration	2.4mg/ml
Formulation	Rabbit IgG in pH7.4 PBS, 0.05% NaN ₃ , 40% Glycerol.
Storage	Store at -20°C

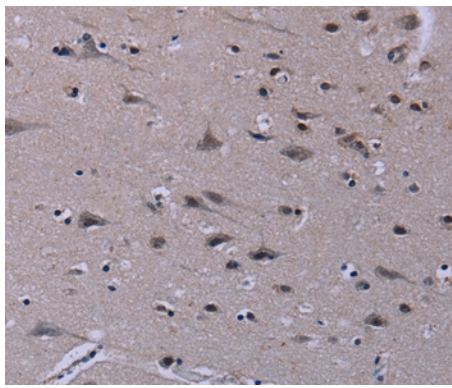
Application Details

Immunohistochemistry: 1:50-1:200

Images



Immunohistochemical analysis of paraffin-embedded Human breast cancer tissue using #37640 at dilution 1/40.



Immunohistochemical analysis of paraffin-embedded Human brain tissue using #37640 at dilution 1/40.

Background

The protein encoded by this gene is a helix-loop-helix (HLH) protein that can form heterodimers with other HLH proteins. However, the encoded protein lacks a basic DNA-binding domain and therefore inhibits the DNA binding of any HLH protein with which it interacts.

Note: This product is for in vitro research use only