

IL17C Antibody

Catalog No: #37646



Orders: [order@signalwayantibody.com](mailto:order@signalwayantibody.com)  
Support: [tech@signalwayantibody.com](mailto:tech@signalwayantibody.com)

Description

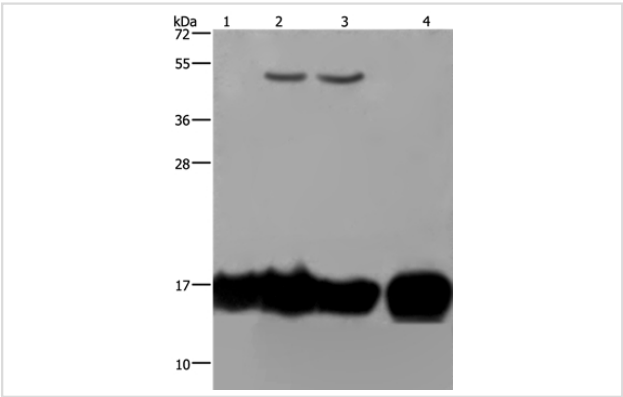
Product Name	IL17C Antibody
Host Species	Rabbit
Clonality	Polyclonal
Purification	Antigen affinity purification.
Applications	WB IHC
Species Reactivity	Hu
Specificity	The antibody detects endogenous levels of total IL17C protein.
Immunogen Type	Peptide
Immunogen Description	Synthetic peptide corresponding to a region derived from internal residues of human interleukin 17C
Target Name	IL17C
Other Names	CX2; IL-17C
Accession No.	Swiss-Prot#: Q9P0M4NCBI Gene ID: 27189Gene Accssion: NP_037410
Uniprot	Q9P0M4
GeneID	27189;
SDS-PAGE MW	22kd
Concentration	2.9mg/ml
Formulation	Rabbit IgG in pH7.4 PBS, 0.05% NaN3, 40% Glycerol.
Storage	Store at -20°C

Application Details

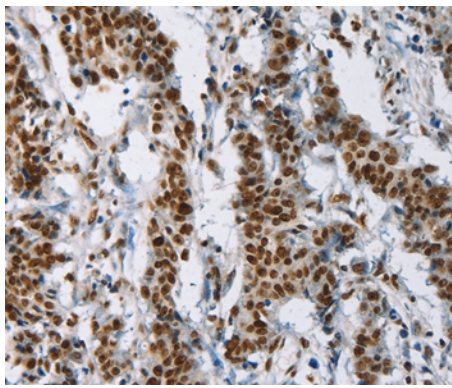
Western blotting: 1:500-1:2000

Immunohistochemistry: 1:50-1:200

Images



Gel: 10%SDS-PAGE  
Lysates (from left to right): A549 and K562 cell, Raji cell and human fetal intestine tissue  
Amount of lysate: 40ug per lane  
Primary antibody: 1/250 dilution  
Secondary antibody dilution: 1/8000  
Exposure time: 20 seconds



Immunohistochemical analysis of paraffin-embedded Human gastric cancer tissue using #37646 at dilution 1/50.

## Background

The protein encoded by this gene is a T cell-derived cytokine that shares the sequence similarity with IL17. This cytokine was reported to stimulate the release of tumor necrosis factor alpha and interleukin 1 beta from a monocytic cell line. The expression of this cytokine was found to be restricted to activated T cells.

Note: This product is for in vitro research use only