

## KSR1 Antibody

Catalog No: #37692

Orders: [order@signalwayantibody.com](mailto:order@signalwayantibody.com)Support: [tech@signalwayantibody.com](mailto:tech@signalwayantibody.com)

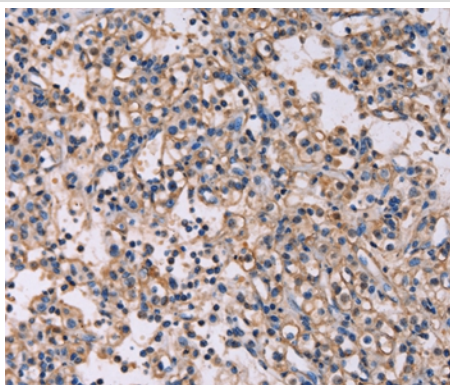
## Description

Product Name	KSR1 Antibody
Host Species	Rabbit
Clonality	Polyclonal
Purification	Antigen affinity purification.
Applications	IHC
Species Reactivity	Hu
Specificity	The antibody detects endogenous levels of total KSR1 protein.
Immunogen Type	Peptide
Immunogen Description	Synthetic peptide corresponding to residues near the C terminal of human kinase suppressor of ras 1
Target Name	KSR1
Other Names	KSR; RSU2
Accession No.	Swiss-Prot#: Q8IVT5NCBI Gene ID: 8844Gene Accssion: NP_055053/Q8IVT5
Uniprot	Q8IVT5
GeneID	8844;
Concentration	2.1mg/ml
Formulation	Rabbit IgG in pH7.4 PBS, 0.05% NaN <sub>3</sub> , 40% Glycerol.
Storage	Store at -20°C

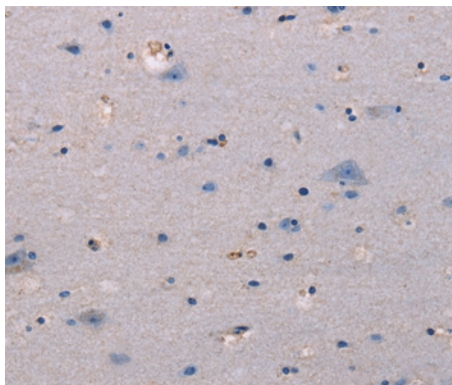
## Application Details

Immunohistochemistry: 1:25-1:100

## Images



Immunohistochemical analysis of paraffin-embedded Human prostate cancer tissue using #37692 at dilution 1/30.



Immunohistochemical analysis of paraffin-embedded Human brain tissue using #37692 at dilution 1/30.

## Background

Kinase suppressor of Ras 1 is an enzyme that in humans is encoded by the *KSR1* gene. Location-regulated scaffolding protein connecting MEK to RAF. Promotes MEK and RAF phosphorylation and activity through assembly of an activated signaling complex. By itself, it has no demonstrated kinase activity.

Note: This product is for in vitro research use only