

CERS1 Antibody

Catalog No: #37695

Orders: order@signalwayantibody.comSupport: tech@signalwayantibody.com

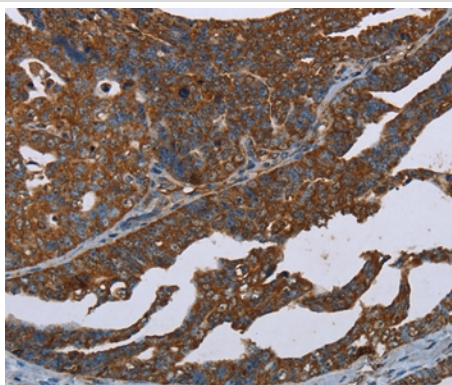
Description

Product Name	CERS1 Antibody
Host Species	Rabbit
Clonality	Polyclonal
Purification	Antigen affinity purification.
Applications	IHC
Species Reactivity	Hu
Specificity	The antibody detects endogenous levels of total CERS1 protein.
Immunogen Type	Peptide
Immunogen Description	Synthetic peptide corresponding to residues near the C terminal of human ceramide synthase 1
Target Name	CERS1
Other Names	LAG1; UOG1; LASS1
Accession No.	Swiss-Prot#: P27544NCBI Gene ID: 10715Gene Accssion: NP_067090
Uniprot	P27544
GeneID	10715;
Concentration	1.4mg/ml
Formulation	Rabbit IgG in pH7.4 PBS, 0.05% NaN ₃ , 40% Glycerol.
Storage	Store at -20°C

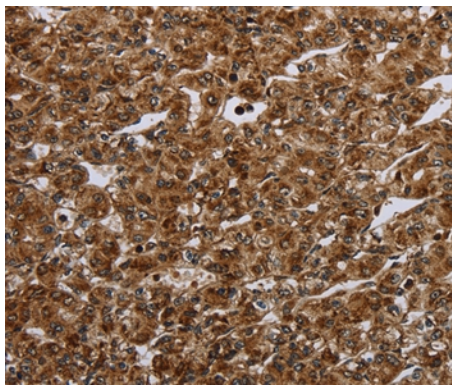
Application Details

Immunohistochemistry: 1:50-1:200

Images



Immunohistochemical analysis of paraffin-embedded Human ovarian cancer tissue using #37695 at dilution 1/20.



Immunohistochemical analysis of paraffin-embedded Human prostate cancer tissue using #37695 at dilution 1/20.

Background

This gene encodes a member of the bone morphogenetic protein (BMP) family and the TGF-beta superfamily. This group of proteins is characterized by a polybasic proteolytic processing site that is cleaved to produce a mature protein containing seven conserved cysteine residues. Members of this family are regulators of cell growth and differentiation in both embryonic and adult tissues. Studies in yeast suggest that the encoded protein is involved in aging. This protein is transcribed from a monocistronic mRNA as well as a bicistronic mRNA, which also encodes growth differentiation factor 1.?

Note: This product is for in vitro research use only