

# CERS4 Antibody

Catalog No: #37696



Orders: [order@signalwayantibody.com](mailto:order@signalwayantibody.com)  
Support: [tech@signalwayantibody.com](mailto:tech@signalwayantibody.com)

## Description

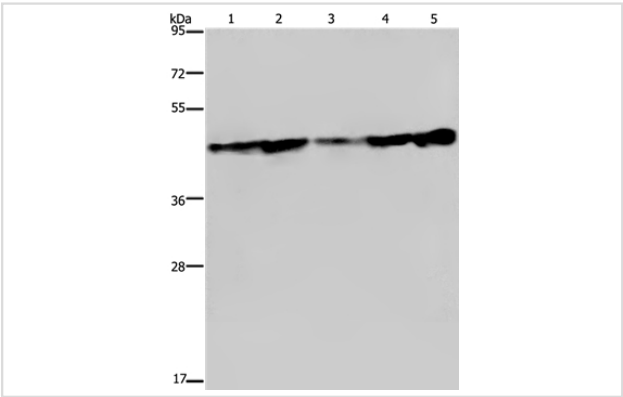
Product Name	CERS4 Antibody
Host Species	Rabbit
Clonality	Polyclonal
Purification	Antigen affinity purification.
Applications	WB IHC
Species Reactivity	Hu
Specificity	The antibody detects endogenous levels of total CERS4 protein.
Immunogen Type	Peptide
Immunogen Description	Synthetic peptide corresponding to a region derived from internal residues of human ceramide synthase 4
Target Name	CERS4
Other Names	Trh1; LASS4
Accession No.	Swiss-Prot#: Q9HA82NCBI Gene ID: 79603Gene Accssion: NP_078828
Uniprot	Q9HA82
GeneID	79603;
SDS-PAGE MW	46kd
Concentration	2.3mg/ml
Formulation	Rabbit IgG in pH7.4 PBS, 0.05% NaN3, 40% Glycerol.
Storage	Store at -20°C

## Application Details

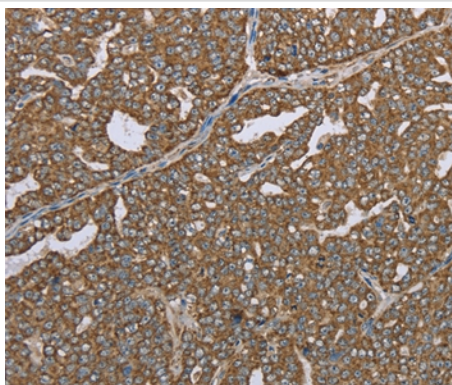
Western blotting: 1:500-1:2000

Immunohistochemistry: 1:50-1:200

## Images



Gel: 8%SDS-PAGE  
Lysates (from left to right): Human fetal liver tissue, HT-29 and HUVEC cell, MCF-7 cell and human hepatocellular carcinoma tissue  
Amount of lysate: 40ug per lane  
Primary antibody: 1/300 dilution  
Secondary antibody dilution: 1/8000  
Exposure time: 10 seconds



Immunohistochemical analysis of paraffin-embedded Human ovarian cancer tissue using #37696 at dilution 1/35.

## Background

The LASS (longevity assurance homolog) family members are highly conserved from yeasts to mammals. Six members of this family of proteins have been characterized (LASS1, LASS2, LASS3, LASS4, LASS5 and LASS6) and they are all involved in sphingolipid synthesis. LASS4 is a 394 amino acid endoplasmic reticulum, multi-pass membrane protein. LASS4 increases the levels of long ceramides such as C22:0- and C24:0-ceramides. In cells deficient for CLN9, as observed in neuronal ceroid lipofuscinosis (NCL) or Batten disease, LASS4 can increase ceramide levels and partially correct growth and apoptosis.

Note: This product is for in vitro research use only