

LARS2 antibody

Catalog No: #22247

Orders: order@signalwayantibody.comSupport: tech@signalwayantibody.com

Description

Product Name	LARS2 antibody
Host Species	Rabbit
Clonality	Polyclonal
Purification	Purified by antigen-affinity chromatography.
Applications	WB IHC IF
Species Reactivity	Hu
Immunogen Type	Recombinant protein
Immunogen Description	Recombinant protein fragment contain a sequence corresponding to a region within amino acids 1 and 174 of LARS2
Target Name	LARS2
Accession No.	NCBI Gene ID: 23395NCBI mRNA#: NM_015340NCBI Protein#: NP_056155
Uniprot	Q15031
GeneID	23395;
Concentration	1mg/ml
Formulation	Supplied in 0.1M Tris-buffered saline with 10% Glycerol (pH7.0). 0.01% Thimerosal was added as a preservative.
Storage	Store at -20°C for long term preservation (recommended). Store at 4°C for short term use.

Application Details

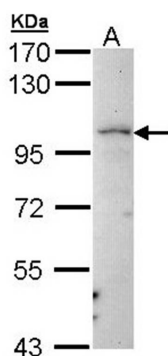
Predicted MW: 102kd

Western blotting: 1:500-1:3000

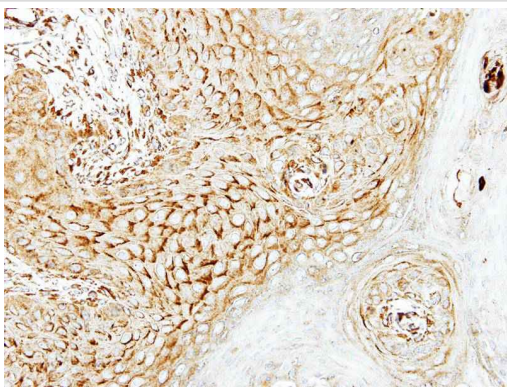
Immunohistochemistry: 1:50-1:500

Immunofluorescence: 1:100-1:200

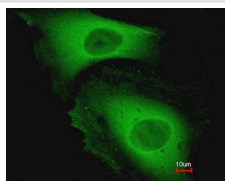
Images



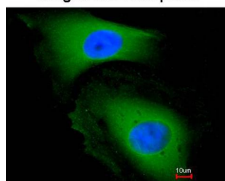
Sample (30 ug of whole cell lysate)
A: Raji
7.5% SDS PAGE
Primary antibody diluted at 1: 5000



Immunohistochemical analysis of paraffin-embedded Cal27 xenograft, using LARS2 antibody at 1: 500 dilution.



Merged with DNA probe



Immunofluorescence analysis of paraformaldehyde-fixed HeLa, using LARS2 antibody at 1: 200 dilution.

Background

This gene encodes a class 1 aminoacyl-tRNA synthetase, mitochondrial leucyl-tRNA synthetase. Each of the twenty aminoacyl-tRNA synthetases catalyzes the aminoacylation of a specific tRNA or tRNA isoaccepting family with the cognate amino acid. [provided by RefSeq]

Note: This product is for in vitro research use only