

MOB1A Antibody

Catalog No: #37737



Orders: order@signalwayantibody.com
Support: tech@signalwayantibody.com

Description

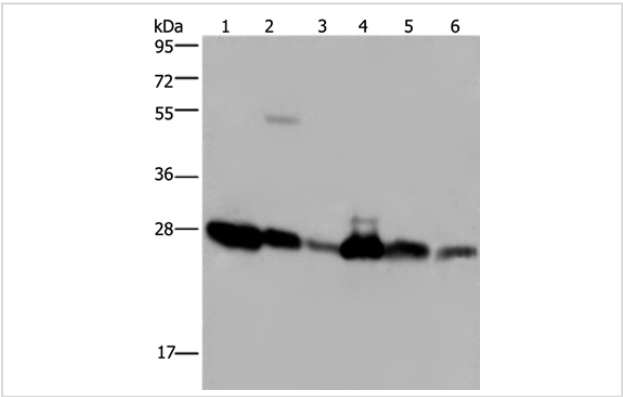
Product Name	MOB1A Antibody
Host Species	Rabbit
Clonality	Polyclonal
Purification	Antigen affinity purification.
Applications	WB IHC
Species Reactivity	Hu Ms Rt
Specificity	The antibody detects endogenous levels of total MOB1A protein.
Immunogen Type	Peptide
Immunogen Description	Synthetic peptide corresponding to residues near the C terminal of human MOB kinase activator 1A
Target Name	MOB1A
Other Names	MOB1; MATS1; Mob4B; C2orf6; MOBK1B; MOBKL1B
Accession No.	Swiss-Prot#: Q9H8S9NCBI Gene ID: 55233Gene Accssion: NP_060691
Uniprot	Q9H8S9
GeneID	55233;
SDS-PAGE MW	25kd
Concentration	1.3mg/ml
Formulation	Rabbit IgG in pH7.4 PBS, 0.05% NaN3, 40% Glycerol.
Storage	Store at -20°C

Application Details

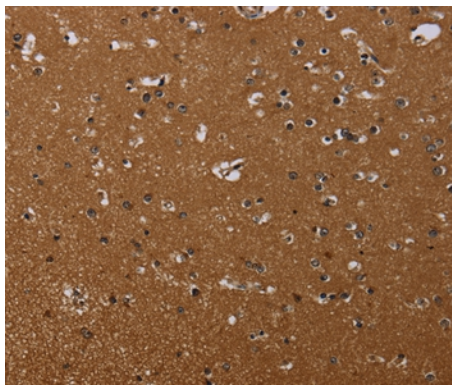
Western blotting: 1:500-1:2000

Immunohistochemistry: 1:25-1:100

Images



Gel: 10%SDS-PAGE
Lysates (from left to right): A375 and K562 cell, mouse liver tissue and Raji cell, Jurkat and Hela cell
Amount of lysate: 40ug per lane
Primary antibody: 1/200 dilution
Secondary antibody dilution: 1/8000
Exposure time: 10 seconds



Immunohistochemical analysis of paraffin-embedded Human liver cancer tissue using #37737 at dilution 1/20.

Background

MOB1 was first identified in yeast as a protein that binds to Mps with essential roles in the completion of mitosis and the maintenance of ploidy . Its *Drosophila* and mammalian homologs, Mats and MOB1, respectively, are involved in the Hippo signaling tumor suppressor pathway, which plays a critical role in organ size regulation and which has been implicated in cancer development . ?

Note: This product is for in vitro research use only