

## Smad1/Smad5/Smad8 Antibody

Catalog No: #21684

Package Size: #21684-1 50ul #21684-2 100ul

Orders: [order@signalwayantibody.com](mailto:order@signalwayantibody.com)Support: [tech@signalwayantibody.com](mailto:tech@signalwayantibody.com)

## Description

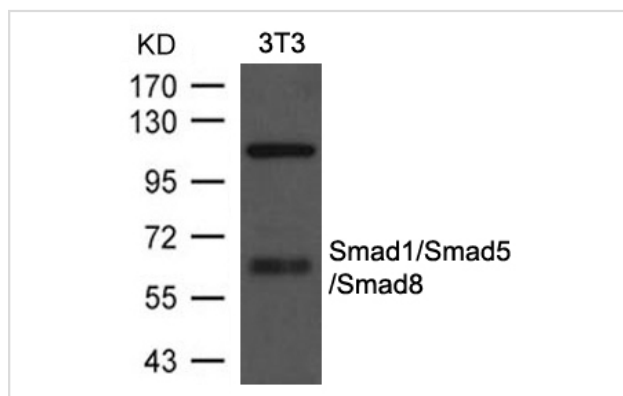
Product Name	Smad1/Smad5/Smad8 Antibody
Host Species	Rabbit
Clonality	Polyclonal
Applications	WB
Species Reactivity	Hu Ms Rt
Specificity	The antibody detects endogenous level of total Smad1, Smad5, Smad8 protein.
Immunogen Type	Peptide-KLH
Immunogen Description	Peptide sequence around aa.461-465(I-S-S-V-S) derived from Human Smad1. This sequence has the same homology in Smad5 and Smad8.
Target Name	Smad1/Smad5/Smad8
Other Names	Mad-related protein 1, SMAD 1, hSMAD1, Transforming growth factor-beta-signaling protein 1,
Accession No.	Swiss-Prot:Q15797Gene ID:4086
Uniprot	Q15797
GeneID	4086;
Concentration	1.0mg/ml

## Application Details

Predicted MW: 60kd

Western blotting: 1: 500~1: 1000

## Images



Western blot analysis of extracts from 3T3 cells using Smad1/Smad5/Smad8 Antibody #21684.

## Background

Transcriptional modulator activated by BMP (bone morphogenetic proteins) type 1 receptor kinase. SMAD1 is a receptor-regulated SMAD (R-SMAD). SMAD5 is a receptor-regulated SMAD (R-SMAD). SMAD9 is a receptor-regulated SMAD (R-SMAD). Has been shown to be activated by activin type I receptor-like kinases (ALK-2, ALK-3, ALK-6) which stimulate heteromerization between SMAD9 and SMAD4. May play a role in

osteoblast differentiation and maturation.

---

Note: This product is for in vitro research use only