

IP6K1 antibody

Catalog No: #22254



Orders: [order@signalwayantibody.com](mailto:order@signalwayantibody.com)  
Support: [tech@signalwayantibody.com](mailto:tech@signalwayantibody.com)

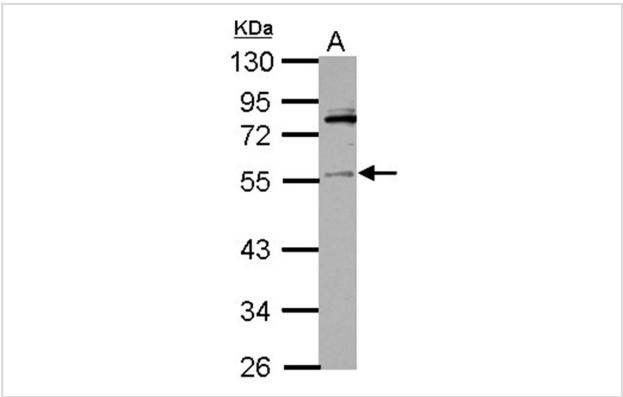
Description

Product Name	IP6K1 antibody
Host Species	Rabbit
Clonality	Polyclonal
Purification	Purified by antigen-affinity chromatography.
Applications	WB IHC IF
Species Reactivity	Hu
Immunogen Type	Recombinant protein
Immunogen Description	Recombinant protein fragment contain a sequence corresponding to a region within amino acids 50 and 279 of IP6K1
Target Name	IP6K1
Accession No.	Swiss-Prot:Q92551Gene ID:9807
Uniprot	Q92551
GeneID	9807;
Concentration	1mg/ml
Formulation	Supplied in 0.1M Tris-buffered saline with 10% Glycerol (pH7.0). 0.01% Thimerosal was added as a preservative.
Storage	Store at -20°C for long term preservation (recommended). Store at 4°C for short term use.

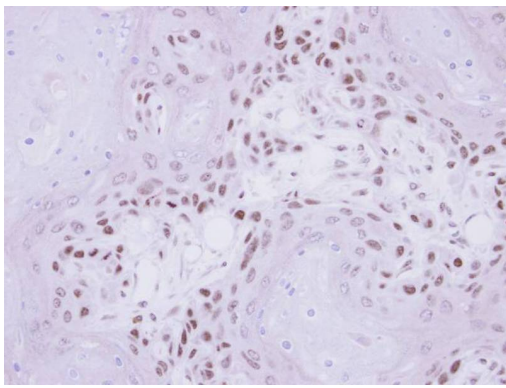
Application Details

Predicted MW: 50kd  
Western blotting: 1:500-1:3000  
Immunohistochemistry: 1:100-1:500  
Immunofluorescence: 1:100-1:200

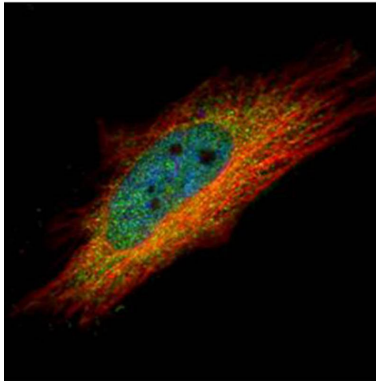
Images



Sample (30 ug of whole cell lysate)  
A: HeLa  
10% SDS PAGE  
Primary antibody diluted at 1: 1000



Immunohistochemical analysis of paraffin-embedded Ca922 Xenograft, using IP6K1 antibody at 1: 500 dilution.



Confocal immunofluorescence analysis (Olympus FV10i) of paraformaldehyde-fixed HeLa, using IP6K1 antibody (Green) at 1: 500 dilution and alpha-tubulin antibody (Red) at 1: 2000.

## Background

This gene encodes a protein that belongs to the inositol phosphokinase (IPK) family. This protein is likely responsible for the conversion of inositol hexakisphosphate (InsP6) to diphosphoinositol pentakisphosphate (InsP7/PP-InsP5). It may also convert 1,3,4,5,6-pentakisphosphate (InsP5) to PP-InsP4. Alternative splicing occurs for this gene; however, the full-length nature of all transcript variants has not yet been described. [provided by RefSeq]

Note: This product is for in vitro research use only