

## PARP8 Antibody

Catalog No: #37798

Orders: [order@signalwayantibody.com](mailto:order@signalwayantibody.com)Support: [tech@signalwayantibody.com](mailto:tech@signalwayantibody.com)

## Description

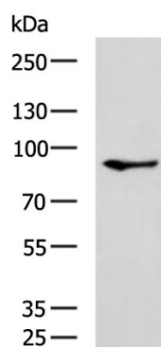
Product Name	PARP8 Antibody
Host Species	Rabbit
Clonality	Polyclonal
Purification	Antigen affinity purification.
Applications	WB IHC
Species Reactivity	Hu Ms
Specificity	The antibody detects endogenous levels of total PARP8 protein.
Immunogen Type	Peptide
Immunogen Description	Synthetic peptide corresponding to residues near the C terminal of human poly (ADP-ribose) polymerase family, member 8
Target Name	PARP8
Other Names	ARTD16; pART16
Accession No.	Swiss-Prot#: Q8N3A8NCBI Gene ID: 79668Gene Accssion: NP_078891
Uniprot	Q8N3A8
GeneID	79668;
SDS-PAGE MW	96kd
Concentration	0.8 mg/ml
Formulation	Rabbit IgG in pH7.4 PBS, 0.05% NaN <sub>3</sub> , 40% Glycerol.
Storage	Store at -20°C

## Application Details

Western blotting: 1:200-1:1000

Immunohistochemistry: 1:50-1:200

## Images



Gel: 6%SDS-PAGE

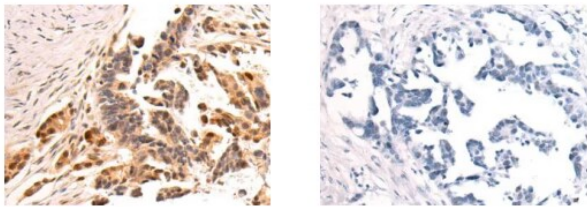
Lysate: 40  $\mu$ g

Lane: Mouse testis tissue lysate

Primary antibody: PARP8 Antibody at dilution 1/200

Secondary antibody: Goat anti rabbit IgG at 1/8000 dilution

Exposure time: 40 seconds



The image on the left is immunohistochemistry of paraffin-embedded Human colon cancer tissue using PARP8 Antibody at dilution 1/50, on the right is treated with synthetic peptide. (Original magnification:  $\times 200$ )

## Background

Poly(ADP-ribosylation) is a method of DNA damage-dependent posttranslational modification that helps to rescue injured proliferating cells from cell death. The PARP (poly(ADP-ribose) polymerase) proteins comprise a superfamily of enzymes that functionally modify histones and other nuclear proteins, thereby preventing cell death.?

Note: This product is for in vitro research use only