

HSPG2 Antibody

Catalog No: #37817

Orders: order@signalwayantibody.comSupport: tech@signalwayantibody.com

Description

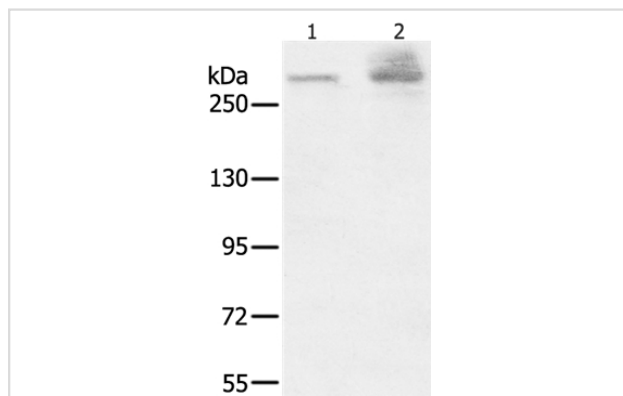
| | |
|-----------------------|---|
| Product Name | HSPG2 Antibody |
| Host Species | Rabbit |
| Clonality | Polyclonal |
| Purification | Antigen affinity purification. |
| Applications | IHC |
| Species Reactivity | Hu Ms |
| Specificity | The antibody detects endogenous levels of total HSPG2 protein. |
| Immunogen Type | Peptide |
| Immunogen Description | Synthetic peptide corresponding to residues near the C terminal of human heparan sulfate proteoglycan 2 |
| Target Name | HSPG2 |
| Other Names | PLC; SJA; SJS; HSPG; SJS1; PRCAN |
| Accession No. | Swiss-Prot#: P98160NCBI Gene ID: 3339Gene Accssion: NP_005520/P98160 |
| Uniprot | P98160 |
| GeneID | 3339; |
| SDS-PAGE MW | 469kd |
| Concentration | 3.2mg/ml |
| Formulation | Rabbit IgG in pH7.4 PBS, 0.05% NaN ₃ , 40% Glycerol. |
| Storage | Store at -20°C |

Application Details

Western blotting: 1:200-1:1000

Immunohistochemistry: 1:50-1:200

Images



Gel: 6%SDS-PAGE

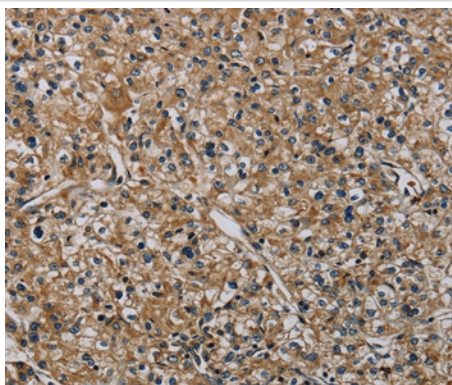
Lysates (from left to right): A549 and K562 cell

Amount of lysate: 40ug per lane

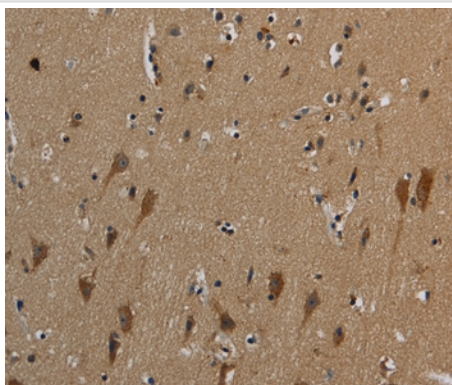
Primary antibody: 1/200 dilution

Secondary antibody dilution: 1/8000

Exposure time: 40 seconds



Immunohistochemical analysis of paraffin-embedded Human prostate cancer tissue using #37817 at dilution 1/50.



Immunohistochemical analysis of paraffin-embedded Human brain tissue using #37817 at dilution 1/50.

Background

This gene encodes the perlecan protein, which consists of a core protein to which three long chains of glycosaminoglycans (heparan sulfate or chondroitin sulfate) are attached. The perlecan protein is a large multidomain proteoglycan that binds to and cross-links many extracellular matrix components and cell-surface molecules. It has been shown that this protein interacts with laminin, prolargin, collagen type IV, FGFBP1, FBLN2, FGF7 and transthyretin, etc., and it plays essential roles in multiple biological activities.

Note: This product is for in vitro research use only