

SMC1B antibody

Catalog No: #22261



Orders: order@signalwayantibody.com
Support: tech@signalwayantibody.com

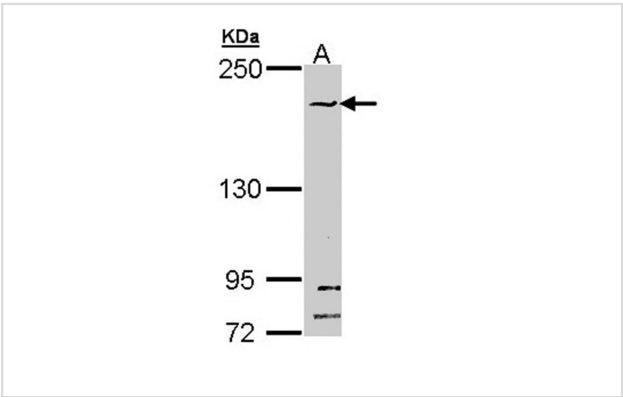
Description

Product Name	SMC1B antibody
Host Species	Rabbit
Clonality	Polyclonal
Purification	Purified by antigen-affinity chromatography.
Applications	WB IHC IF
Species Reactivity	Hu
Immunogen Type	Recombinant protein
Immunogen Description	Recombinant protein fragment contain a sequence corresponding to a region within amino acids 154 and 403 of Human SMC1B
Target Name	SMC1B
Accession No.	Swiss-Prot:Q8NDV3Gene ID:27127
Uniprot	Q8NDV3
GeneID	27127;
Concentration	1mg/ml
Formulation	Supplied in 0.1M Tris-buffered saline with 10% Glycerol (pH7.0). 0.01% Thimerosal was added as a preservative.
Storage	Store at -20°C for long term preservation (recommended). Store at 4°C for short term use.

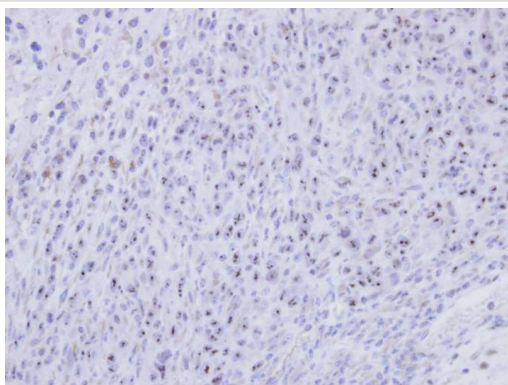
Application Details

Predicted MW: 144kd
Western blotting: 1:500-1:3000
Immunohistochemistry: 1:50-1:500
Immunofluorescence: 1:100-1:200

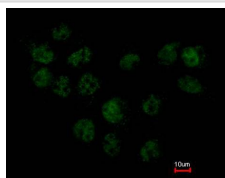
Images



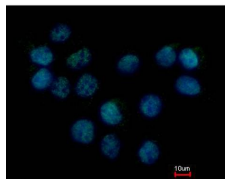
Sample (30 ug of whole cell lysate)
A: HeLa
5% SDS PAGE
Primary antibody diluted at 1: 1000



Immunohistochemical analysis of paraffin-embedded SAS xenograft, using SMC1B antibody at 1: 500 dilution.



Costained with Hoechst 33342



Immunofluorescence analysis of paraformaldehyde-fixed A431, using SMC1B antibody at 1: 500 dilution.

Background

SMC1L2 belongs to a family of proteins required for chromatid cohesion and DNA recombination during meiosis and mitosis (3:Revenkova et al., 2001 [PubMed 11564881]).[supplied by OMIM]

Note: This product is for in vitro research use only