

## ZMIZ1 Antibody

Catalog No: #37868

Orders: [order@signalwayantibody.com](mailto:order@signalwayantibody.com)Support: [tech@signalwayantibody.com](mailto:tech@signalwayantibody.com)

## Description

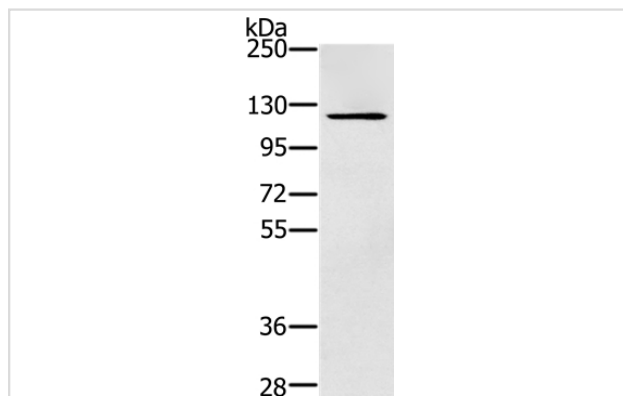
Product Name	ZMIZ1 Antibody
Host Species	Rabbit
Clonality	Polyclonal
Purification	Antigen affinity purification.
Applications	WB IHC
Species Reactivity	Hu Ms
Specificity	The antibody detects endogenous levels of total ZMIZ1 protein.
Immunogen Type	Peptide
Immunogen Description	Synthetic peptide corresponding to residues near the N terminal of human zinc finger, MIZ-type containing 1
Target Name	ZMIZ1
Other Names	MIZ; RAI17; ZIMP10; hZIMP10; TRAFIP10
Accession No.	Swiss-Prot#: Q9ULJ6NCBI Gene ID: 57178Gene Accssion: NP_065071/Q9ULJ6
Uniprot	Q9ULJ6
GeneID	57178;
SDS-PAGE MW	115kd
Concentration	2.8mg/ml
Formulation	Rabbit IgG in pH7.4 PBS, 0.05% NaN <sub>3</sub> , 40% Glycerol.
Storage	Store at -20°C

## Application Details

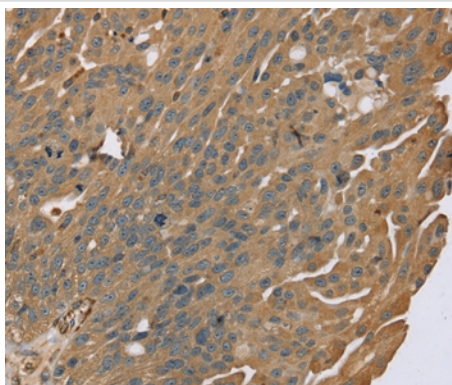
Western blotting: 1:200-1:1000

Immunohistochemistry: 1:25-1:100

## Images



Gel: 6%SDS-PAGE  
Lysate: 40ug Skov3 cell  
Primary antibody: 1/200 dilution  
Secondary antibody dilution: 1/8000  
Exposure time: 2 minutes



Immunohistochemical analysis of paraffin-embedded Human breast cancer tissue using #37868 at dilution 1/40.

## Background

This gene encodes a member of the PIAS (protein inhibitor of activated STAT) family of proteins. The encoded protein regulates the activity of various transcription factors, including the androgen receptor, Smad3/4, and p53. The encoded protein may also play a role in sumoylation. A translocation between this locus on chromosome 10 and the protein tyrosine kinase ABL1 locus on chromosome 9 has been associated with acute lymphoblastic leukemia.?

Note: This product is for in vitro research use only