

# RNF5 Antibody

Catalog No: #37869



Orders: [order@signalwayantibody.com](mailto:order@signalwayantibody.com)  
Support: [tech@signalwayantibody.com](mailto:tech@signalwayantibody.com)

## Description

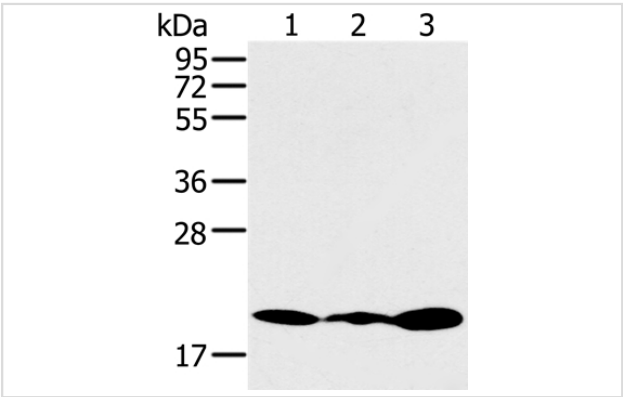
Product Name	RNF5 Antibody
Host Species	Rabbit
Clonality	Polyclonal
Purification	Antigen affinity purification.
Applications	WB
Species Reactivity	Hu Ms Rt
Specificity	The antibody detects endogenous levels of total RNF5 protein.
Immunogen Type	Peptide
Immunogen Description	Synthetic peptide corresponding to residues near the N terminal of human ring finger protein 5, E3 ubiquitin protein ligase
Target Name	RNF5
Other Names	RMA1; RING5
Accession No.	Swiss-Prot#: Q99942NCBI Gene ID: 6048Gene Accssion: NP_008844/Q99942
Uniprot	Q99942
GeneID	6048;
SDS-PAGE MW	20kd
Concentration	2.4mg/ml
Formulation	Rabbit IgG in pH7.4 PBS, 0.05% NaN3, 40% Glycerol.
Storage	Store at -20°C

## Application Details

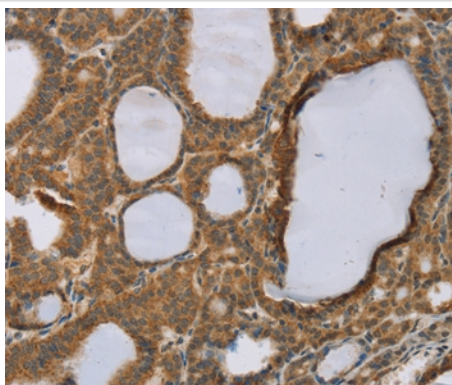
Western blotting: 1:500-1:2000

Immunohistochemistry: 1:25-1:100

## Images



Gel: 10%SDS-PAGE  
Lysates (from left to right): Jurkat, 231 and K562 cell  
Amount of lysate: 40ug per lane  
Primary antibody: 1/200 dilution  
Secondary antibody dilution: 1/8000  
Exposure time: 3 minutes



Immunohistochemical analysis of paraffin-embedded Human thyroid cancer tissue using #37869 at dilution 1/35.

## Background

The protein encoded by this gene contains a RING finger, which is a motif known to be involved in protein-protein interactions. This protein is a membrane-bound ubiquitin ligase. It can regulate cell motility by targeting paxillin ubiquitination and altering the distribution and localization of paxillin in cytoplasm and cell focal adhesions.

Note: This product is for in vitro research use only