

## SYCP1 Antibody

Catalog No: #37899

Orders: [order@signalwayantibody.com](mailto:order@signalwayantibody.com)Support: [tech@signalwayantibody.com](mailto:tech@signalwayantibody.com)

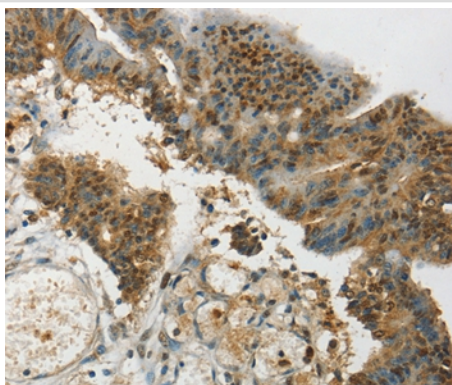
## Description

Product Name	SYCP1 Antibody
Host Species	Rabbit
Clonality	Polyclonal
Purification	Antigen affinity purification.
Applications	IHC
Species Reactivity	Hu
Specificity	The antibody detects endogenous levels of total SYCP1 protein.
Immunogen Type	Peptide
Immunogen Description	Synthetic peptide corresponding to a region derived from internal residues of human synaptonemal complex protein 1
Target Name	SYCP1
Other Names	CT8; SCP1; SCP-1; HOM-TES-14
Accession No.	Swiss-Prot#: Q15431NCBI Gene ID: 6847Gene Accssion: NP_003167/Q15431
Uniprot	Q15431
GeneID	6847;
Concentration	2.4mg/ml
Formulation	Rabbit IgG in pH7.4 PBS, 0.05% NaN <sub>3</sub> , 40% Glycerol.
Storage	Store at -20°C

## Application Details

Immunohistochemistry: 1:25-1:100

## Images



Immunohistochemical analysis of paraffin-embedded Human colorectal cancer tissue using #37899 at dilution 1/35.

## Background

The synaptonemal complex protein 1 (SCP-1), also known as SYCP1(A), SYN1(I) and HOM-TES-14, is a protein product of human chromosome 1p13-p12. SCP-1 is a major component of the transverse filaments of synaptonemal complexes and functions by pairing homologous chromosomes

during meiotic prophase in spermatocytes, which is an essential step for the generation of haploid cells in meiosis I. SCP-1 is expressed in the testis, adult brain, some malignant gliomas, breast, renal cell and ovarian cancer. SCP-1 is known to be selectively expressed during the meiotic prophase of spermatocytes and shows cell cycle phase-independent nuclear expression in cancer cells.

---

Note: This product is for in vitro research use only