

## SEPN1 Antibody

Catalog No: #37905

Orders: [order@signalwayantibody.com](mailto:order@signalwayantibody.com)Support: [tech@signalwayantibody.com](mailto:tech@signalwayantibody.com)

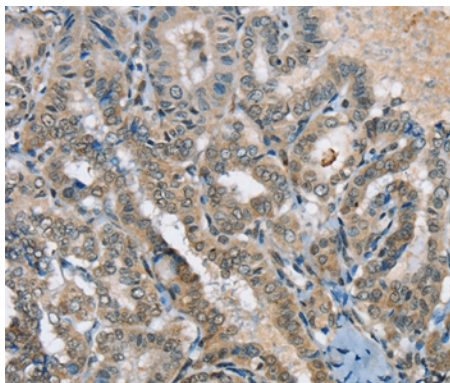
## Description

Product Name	SEPN1 Antibody
Host Species	Rabbit
Clonality	Polyclonal
Purification	Antigen affinity purification.
Applications	IHC
Species Reactivity	Hu
Specificity	The antibody detects endogenous levels of total SEPN1 protein.
Immunogen Type	Peptide
Immunogen Description	Synthetic peptide corresponding to a region derived from internal residues of human selenoprotein N, 1
Target Name	SEPN1
Other Names	RSS; CFTD; SELN; MDRS1; RSMD1
Accession No.	Swiss-Prot#: Q9NZV5NCBI Gene ID: 57190Gene Accssion: NP_065184 /Q9NZV5
Uniprot	Q9NZV5
GeneID	57190;
Concentration	0.5mg/ml
Formulation	Rabbit IgG in pH7.4 PBS, 0.05% NaN <sub>3</sub> , 40% Glycerol.
Storage	Store at -20°C

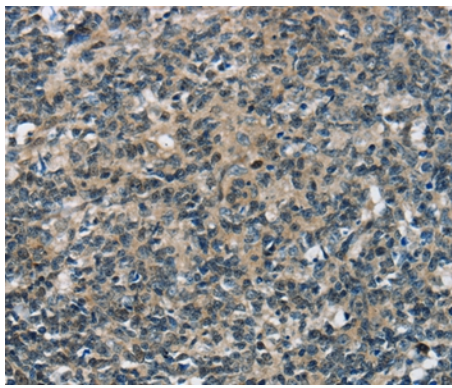
## Application Details

Immunohistochemistry: 1:25-1:100

## Images



Immunohistochemical analysis of paraffin-embedded Human thyroid cancer tissue using #37905 at dilution 1/20.



Immunohistochemical analysis of paraffin-embedded Human tonsil tissue using #37905 at dilution 1/20.

## Background

This gene encodes a selenoprotein, which contains a selenocysteine (Sec) residue at its active site. The selenocysteine is encoded by the UGA codon that normally signals translation termination. The 3' UTR of selenoprotein genes have a common stem-loop structure, the sec insertion sequence (SECIS), that is necessary for the recognition of UGA as a Sec codon rather than as a stop signal.?

Note: This product is for in vitro research use only