

## SGPL1 Antibody

Catalog No: #37919

Orders: [order@signalwayantibody.com](mailto:order@signalwayantibody.com)Support: [tech@signalwayantibody.com](mailto:tech@signalwayantibody.com)

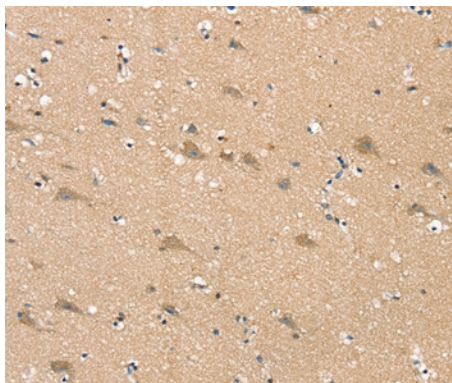
## Description

Product Name	SGPL1 Antibody
Host Species	Rabbit
Clonality	Polyclonal
Purification	Antigen affinity purification.
Applications	IHC
Species Reactivity	Hu
Specificity	The antibody detects endogenous levels of total SGPL1 protein.
Immunogen Type	Peptide
Immunogen Description	Synthetic peptide corresponding to residues near the C terminal of human sphingosine-1-phosphate lyase 1
Target Name	SGPL1
Other Names	SPL; S1PL
Accession No.	Swiss-Prot#: O95470NCBI Gene ID: 8879Gene Accssion: NP_003892/O95470
Uniprot	O95470
GeneID	8879;
Concentration	1.5mg/ml
Formulation	Rabbit IgG in pH7.4 PBS, 0.05% NaN <sub>3</sub> , 40% Glycerol.
Storage	Store at -20°C

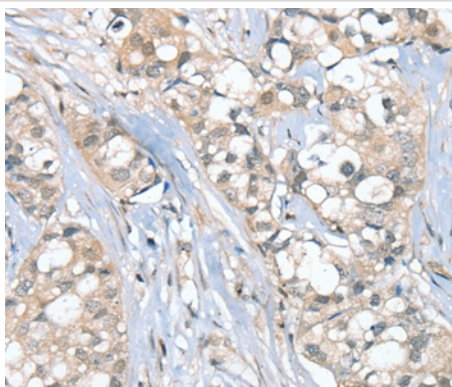
## Application Details

Immunohistochemistry: 1:25-1:100

## Images



Immunohistochemical analysis of paraffin-embedded Human brain tissue using #37919 at dilution 1/25.



Immunohistochemical analysis of paraffin-embedded Human breast cancer tissue using #37919 at dilution 1/25.

## Background

Sphingosine-1-phosphate lyase 1 is an enzyme that in humans is encoded by the *SGPL1* gene. Cleaves phosphorylated sphingoid bases (PSBs), such as sphingosine-1-phosphate, into fatty aldehydes and phosphoethanolamine. Elevates stress-induced ceramide production and apoptosis.

Note: This product is for in vitro research use only