

## SIGLEC14 Antibody

Catalog No: #37924

Orders: [order@signalwayantibody.com](mailto:order@signalwayantibody.com)Support: [tech@signalwayantibody.com](mailto:tech@signalwayantibody.com)

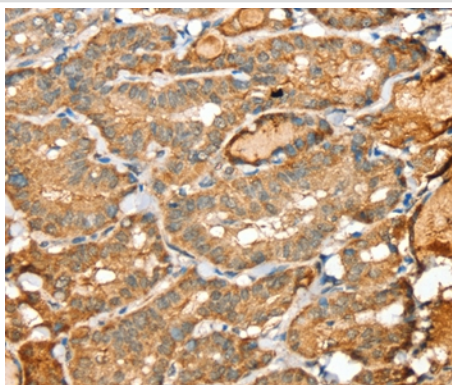
## Description

Product Name	SIGLEC14 Antibody
Host Species	Rabbit
Clonality	Polyclonal
Purification	Antigen affinity purification.
Applications	IHC
Species Reactivity	Hu
Specificity	The antibody detects endogenous levels of total SIGLEC14 protein.
Immunogen Type	Peptide
Immunogen Description	Synthetic peptide corresponding to a region derived from internal residues of human sialic acid binding Ig-like lectin 14
Target Name	SIGLEC14
Other Names	SIG14; Siglec-14; SIGLEC14; UNQ294; UNQ294/PRO333
Accession No.	Swiss-Prot#: Q08ET2NCBI Gene ID: 100049587Gene Accssion: NP_001092082/Q08ET2
Uniprot	Q08ET2
GeneID	100049587;
Concentration	1.9mg/ml
Formulation	Rabbit IgG in pH7.4 PBS, 0.05% NaN <sub>3</sub> , 40% Glycerol.
Storage	Store at -20°C

## Application Details

Immunohistochemistry: 1:25-1:100

## Images



Immunohistochemical analysis of paraffin-embedded Human thyroid cancer tissue using #37924 at dilution 1/30.

## Background

Putative adhesion molecule. Sialic acid-binding paired receptor which may activate associated receptors. Interacts with TYROBP. Mainly expressed in hematopoietic tissues including bone marrow, spleen and fetal liver. Siglec-14 is predominantly expressed in hematopoietic tissues but is also found in

lung and testis.

---

Note: This product is for in vitro research use only