

## SLC14A1 Antibody

Catalog No: #37927

Orders: [order@signalwayantibody.com](mailto:order@signalwayantibody.com)Support: [tech@signalwayantibody.com](mailto:tech@signalwayantibody.com)

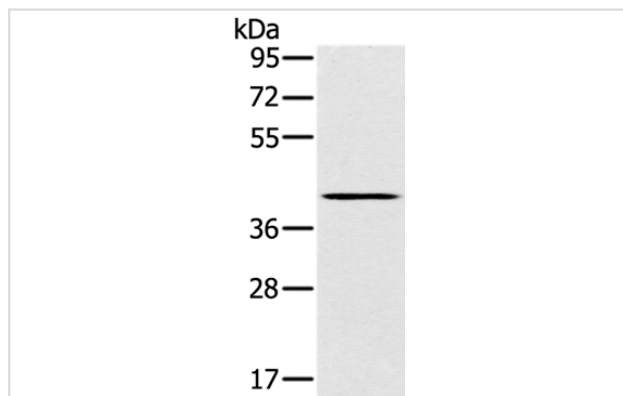
## Description

Product Name	SLC14A1 Antibody
Host Species	Rabbit
Clonality	Polyclonal
Purification	Antigen affinity purification.
Applications	WB
Species Reactivity	Hu Ms
Specificity	The antibody detects endogenous levels of total SLC14A1 protein.
Immunogen Type	Peptide
Immunogen Description	Synthetic peptide corresponding to residues near the N terminal of human solute carrier family 14 (urea transporter), member 1 (Kidd blood group)
Target Name	SLC14A1
Other Names	JK; UT1; UTE; HUT11; RACH1; RACH2; UT-B1; HsT1341
Accession No.	Swiss-Prot#: Q13336NCBI Gene ID: 6563Gene Accssion: NP_001139508/Q13336
Uniprot	Q13336
GeneID	6563;
SDS-PAGE MW	43kd
Concentration	1.2mg/ml
Formulation	Rabbit IgG in pH7.4 PBS, 0.05% NaN <sub>3</sub> , 40% Glycerol.
Storage	Store at -20°C

## Application Details

Western blotting: 1:200-1:1000

## Images



Gel: 8%SDS-PAGE  
 Lysates (from left to right): Mouse kidney tissue  
 Amount of lysate: 40ug per lane  
 Primary antibody: 1/200 dilution  
 Secondary antibody dilution: 1/8000  
 Exposure time: 2 minutes

## Background

The protein encoded by this gene is a membrane transporter that mediates urea transport in erythrocytes. This gene forms the basis for the Kidd blood

group system. Mediates urea transport in erythrocytes By similarity. Low-affinity facilitative urea transporter that allow rapid equilibration between the urinary space and the hyperosmotic interstitium. the rate of urea conduction is increased by hypoosmotic stress.

---

Note: This product is for in vitro research use only