

SLC16A3 Antibody

Catalog No: #37928

Orders: order@signalwayantibody.comSupport: tech@signalwayantibody.com

Description

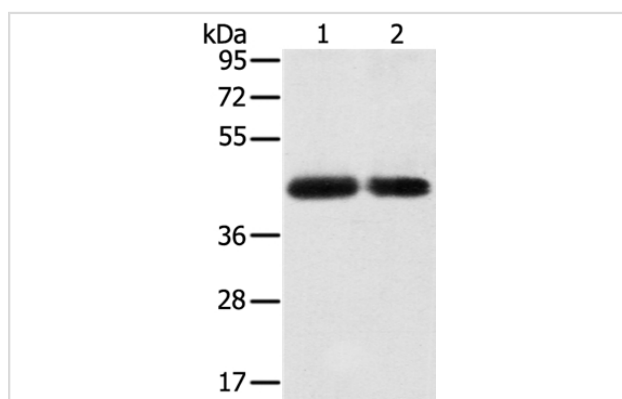
Product Name	SLC16A3 Antibody
Host Species	Rabbit
Clonality	Polyclonal
Purification	Antigen affinity purification.
Applications	WB IHC
Species Reactivity	Hu Ms Rt
Specificity	The antibody detects endogenous levels of total SLC16A3 protein.
Immunogen Type	Peptide
Immunogen Description	Synthetic peptide corresponding to residues near the C terminal of human solute carrier family 16 (monocarboxylate transporter), member 3
Target Name	SLC16A3
Other Names	MCT3; MCT4; MCT 3; MCT 4; MCT-3; MCT-4
Accession No.	Swiss-Prot#: O15427NCBI Gene ID: 9123Gene Accssion: NP_004198/O15427
Uniprot	O15427
GeneID	9123;
SDS-PAGE MW	49kd
Concentration	2mg/ml
Formulation	Rabbit IgG in pH7.4 PBS, 0.05% NaN ₃ , 40% Glycerol.
Storage	Store at -20°C

Application Details

Western blotting: 1:500-1:2000

Immunohistochemistry: 1:30-1:150

Images



Gel: 8%SDS-PAGE

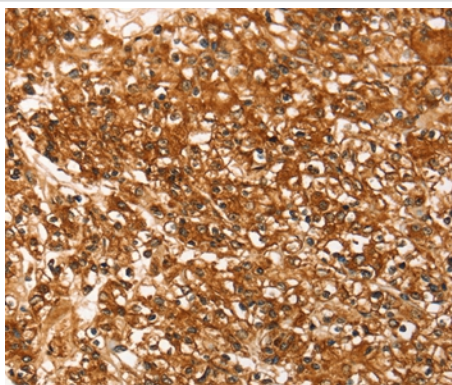
Lysates (from left to right): PC3 and hepg2 cell

Amount of lysate: 40ug per lane

Primary antibody: 1/200 dilution

Secondary antibody dilution: 1/8000

Exposure time: 2 minutes



Immunohistochemical analysis of paraffin-embedded Human prostate cancer tissue using #37928 at dilution 1/30.

Background

Lactic acid and pyruvate transport across plasma membranes is catalyzed by members of the proton-linked monocarboxylate transporter (MCT) family, which has been designated solute carrier family-16. Each MCT appears to have slightly different substrate and inhibitor specificities and transport kinetics, which are related to the metabolic requirements of the tissues in which it is found. The MCTs, which include MCT1 (SLC16A1; MIM 600682) and MCT2 (SLC16A7; MIM 603654), are characterized by 12 predicted transmembrane domains.

Note: This product is for in vitro research use only