

SLC16A10 Antibody

Catalog No: #37930

Orders: order@signalwayantibody.comSupport: tech@signalwayantibody.com

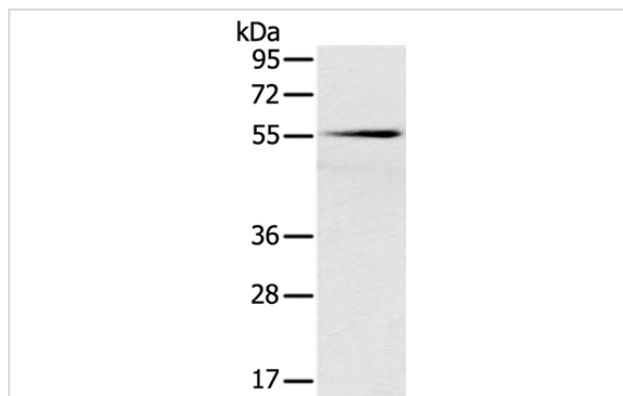
Description

Product Name	SLC16A10 Antibody
Host Species	Rabbit
Clonality	Polyclonal
Purification	Antigen affinity purification.
Applications	WB
Species Reactivity	Hu Ms
Specificity	The antibody detects endogenous levels of total SLC16A10 protein.
Immunogen Type	Peptide
Immunogen Description	Synthetic peptide corresponding to residues near the C terminal of human solute carrier family 16 (aromatic amino acid transporter), member 10
Target Name	SLC16A10
Other Names	TAT1; MCT10; PRO0813
Accession No.	Swiss-Prot#: Q8TF71NCBI Gene ID: 117247Gene Accssion: NP_061063/Q8TF71?
Uniprot	Q8TF71
GeneID	117247;
SDS-PAGE MW	55kd
Concentration	1.4mg/ml
Formulation	Rabbit IgG in pH7.4 PBS, 0.05% NaN ₃ , 40% Glycerol.
Storage	Store at -20°C

Application Details

Western blotting: 1:200-1:1000

Images



Gel: 8%SDS-PAGE
 Lysates (from left to right): Mouse pancreas tissue
 Amount of lysate: 40ug per lane
 Primary antibody: 1/200 dilution
 Secondary antibody dilution: 1/8000
 Exposure time: 2 minutes

Background

SLC16A10 is a member of a family of plasma membrane amino acid transporters that mediate the Na(+)-independent transport of aromatic amino

acids across the plasma membrane. Sodium-independent transporter that mediates the uptake of aromatic acid. Can function as a net efflux pathway for aromatic amino acids in the basolateral epithelial cells.

Note: This product is for in vitro research use only