

MDH2 antibody

Catalog No: #22270



Orders: order@signalwayantibody.com
Support: tech@signalwayantibody.com

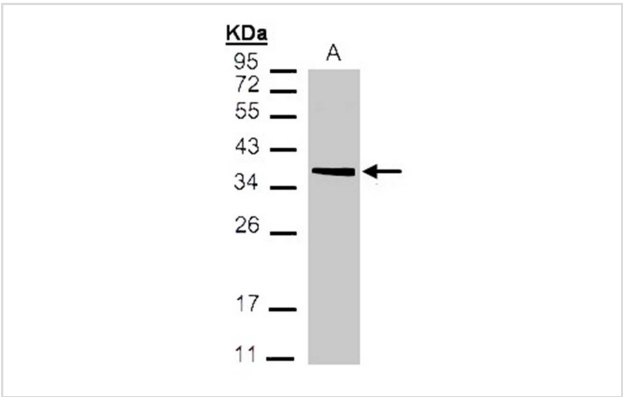
Description

Product Name	MDH2 antibody
Host Species	Rabbit
Clonality	Polyclonal
Purification	Purified by antigen-affinity chromatography.
Applications	WB IHC
Species Reactivity	Hu
Immunogen Type	Recombinant protein
Immunogen Description	Recombinant protein fragment contain a sequence corresponding to a region within amino acids 40 and 289 of Human MDH2
Target Name	MDH2
Other Names	M-MDH; MDH; MGC:3559; MOR1
Accession No.	Swiss-Prot:P40926Gene ID:4191
Uniprot	P40926
GeneID	4191;
Concentration	0.8mg/ml
Formulation	Supplied in 0.1M Tris-buffered saline with 10% Glycerol (pH7.0). 0.01% Thimerosal was added as a preservative.
Storage	Store at -20°C for long term preservation (recommended). Store at 4°C for short term use.

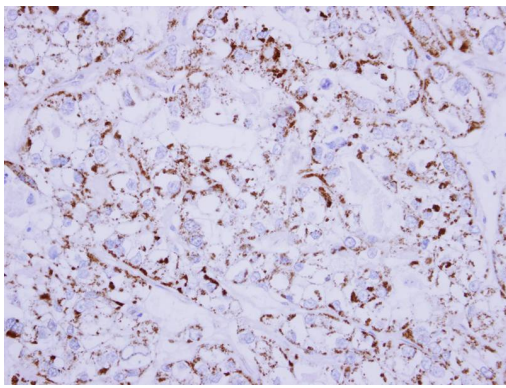
Application Details

Predicted MW: 36kd
Western blotting: 1:500-1:3000
Immunohistochemistry: 1:50-1:500

Images



Sample(30 ug of whole cell lysate)
A: 293T
12% SDS PAGE
Primary antibody diluted at 1: 1000



Immunohistochemical analysis of paraffin-embedded OVCA xenograft, using MDH2 antibody at 1: 500 dilution.

Background

Malate dehydrogenase catalyzes the reversible oxidation of malate to oxaloacetate, utilizing the NAD/NADH cofactor system in the citric acid cycle. The protein encoded by this gene is localized to the mitochondria and may play pivotal roles in the malate-aspartate shuttle that operates in the metabolic coordination between cytosol and mitochondria. [provided by RefSeq]

Note: This product is for in vitro research use only