

SLC40A1 Antibody

Catalog No: #37943

Orders: order@signalwayantibody.comSupport: tech@signalwayantibody.com

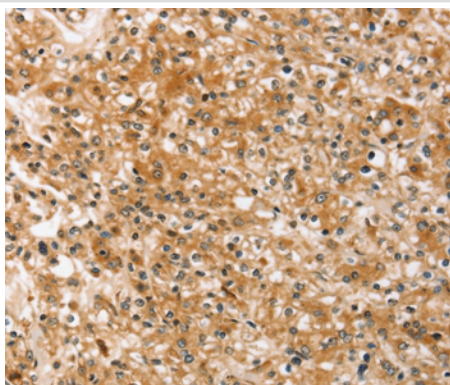
Description

Product Name	SLC40A1 Antibody
Host Species	Rabbit
Clonality	Polyclonal
Purification	Antigen affinity purification.
Applications	IHC
Species Reactivity	Hu
Specificity	The antibody detects endogenous levels of total SLC40A1 protein.
Immunogen Type	Peptide
Immunogen Description	Synthetic peptide corresponding to a region derived from internal residues of human solute carrier family 40 (iron-regulated transporter), member 1
Target Name	SLC40A1
Other Names	FPN1; HFE4; MTP1; IREG1; MST079; MSTP079; SLC11A3
Accession No.	Swiss-Prot#: Q9NP59NCBI Gene ID: 30061Gene Accssion: NP_055400/Q9NP59
Uniprot	Q9NP59
GeneID	30061;
Concentration	1.6mg/ml
Formulation	Rabbit IgG in pH7.4 PBS, 0.05% NaN ₃ , 40% Glycerol.
Storage	Store at -20°C

Application Details

Immunohistochemistry: 1:25-1:100

Images



Immunohistochemical analysis of paraffin-embedded Human prostate cancer tissue using #37943 at dilution 1/20.

Background

The protein encoded by this gene is a cell membrane protein that may be involved in iron export from duodenal epithelial cells. Defects in this gene are a cause of hemochromatosis type 4 (HFE4).

Note: This product is for in vitro research use only