

SLC41A2 Antibody

Catalog No: #37944

Orders: order@signalwayantibody.comSupport: tech@signalwayantibody.com

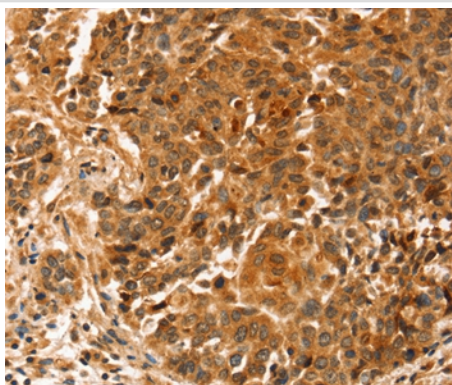
Description

Product Name	SLC41A2 Antibody
Host Species	Rabbit
Clonality	Polyclonal
Purification	Antigen affinity purification.
Applications	IHC
Species Reactivity	Hu
Specificity	The antibody detects endogenous levels of total SLC41A2 protein.
Immunogen Type	Peptide
Immunogen Description	Synthetic peptide corresponding to residues near the N terminal of human solute carrier family 41 (magnesium transporter), member 2
Target Name	SLC41A2
Other Names	SLC41A1-L1
Accession No.	Swiss-Prot#: Q96JW4NCBI Gene ID: 84102Gene Accssion: NP_115524/Q96JW4
Uniprot	Q96JW4
GeneID	84102;
Concentration	3.1mg/ml
Formulation	Rabbit IgG in pH7.4 PBS, 0.05% NaN ₃ , 40% Glycerol.
Storage	Store at -20°C

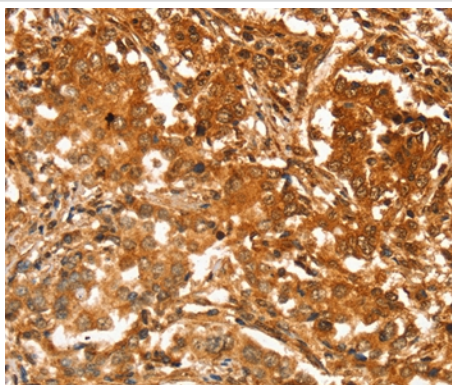
Application Details

Immunohistochemistry: 1:25-1:100

Images



Immunohistochemical analysis of paraffin-embedded Human liver cancer tissue using #37944 at dilution 1/20.



Immunohistochemical analysis of paraffin-embedded Human breast cancer tissue using #37944 at dilution 1/20.

Background

SLC41A2 (solute carrier family 41, member 2), also known as SLC41A1-L, is a 573 amino acid multi-pass membrane protein that belongs to the SLC41A transporter family that includes SLC41A1 and SLC41A3. Expressed in lymphocytes and localizing to the cell membrane, SLC41A2 contains twelve transmembrane domains, three myristoylation sequences, numerous possible phosphorylation sites and a putative N-glycosylation site. SLC41A2 is believed to function as a plasma-membrane magnesium transporter. Magnesium, a cofactor for ATP, plays a vital role in metabolic and biochemical processes.?

Note: This product is for in vitro research use only