

STK32C Antibody

Catalog No: #37971

Orders: order@signalwayantibody.comSupport: tech@signalwayantibody.com

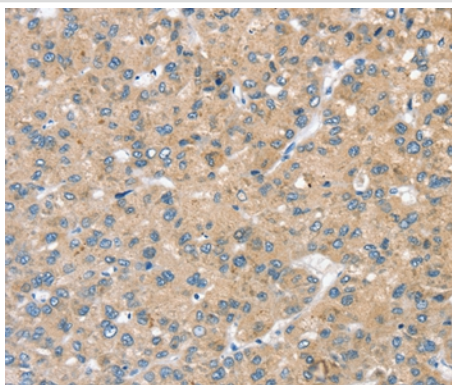
Description

Product Name	STK32C Antibody
Host Species	Rabbit
Clonality	Polyclonal
Purification	Antigen affinity purification.
Applications	IHC
Species Reactivity	Hu Ms
Specificity	The antibody detects endogenous levels of total STK32C protein.
Immunogen Type	Peptide
Immunogen Description	Synthetic peptide corresponding to a region derived from internal residues of human serine/threonine kinase 32C
Target Name	STK32C
Other Names	PKE; YANK3
Accession No.	Swiss-Prot#: Q86UX6NCBI Gene ID: 282974Gene Accssion: NP_775846/Q86UX6
Uniprot	Q86UX6
GeneID	282974;
Concentration	1.3mg/ml
Formulation	Rabbit IgG in pH7.4 PBS, 0.05% NaN ₃ , 40% Glycerol.
Storage	Store at -20°C

Application Details

Immunohistochemistry: 1:20-1:100

Images



Immunohistochemical analysis of paraffin-embedded Human liver cancer tissue using #37971 at dilution 1/20.

Background

The protein encoded by this gene is a member of the serine/threonine protein kinase family. The specific function of this kinase is not known.

Note: This product is for in vitro research use only