

eIF4A1 Mouse Monoclonal Antibody

Catalog No: #38072



Orders: order@signalwayantibody.com
Support: tech@signalwayantibody.com

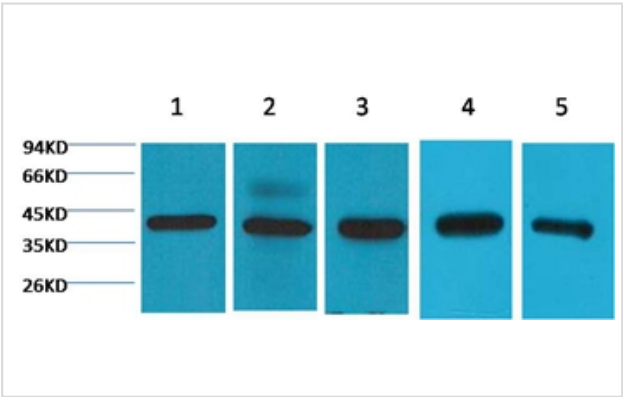
Description

Product Name	eIF4A1 Mouse Monoclonal Antibody
Host Species	Mouse
Clonality	Monoclonal
Purification	Affinity purification using immunogen.
Applications	WB,IHC,IF
Species Reactivity	Hu Rt Ms
Specificity	Antibody detects endogenous eIF4A1 protein.
Target Name	eIF4A1
Other Names	ATP-dependent RNA helicase eIF4A-1; DDX2A; EIF-4A; eIF-4A-I; EIF4A; eIF4A-I; EIF4A1; Eukaryotic initiation factor 4A-I
Accession No.	Swiss-Prot#:P60842
Uniprot	P60842
GeneID	1973;
SDS-PAGE MW	48kd
Concentration	1.0mg/ml
Formulation	Mouse IgG1 in phosphate buffered saline (without Mg2+ and Ca2+), pH 7.4, 150mM NaCl, 0.02% sodium azide and 50% glycerol.
Storage	Store at -20°C

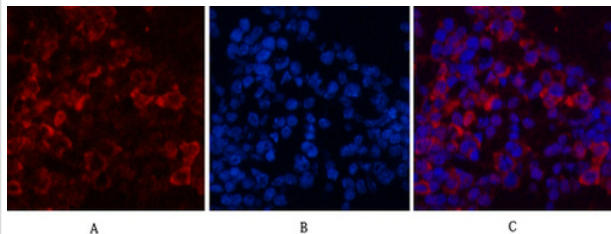
Application Details

WB dilution: 1:1000~1:3000
IHC dilution:1:50-300IF dilution:1:100-200

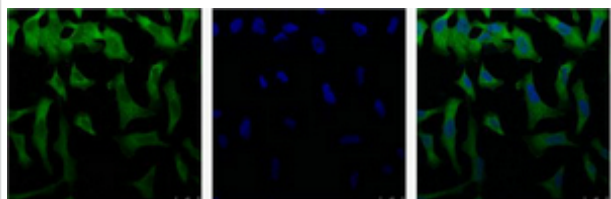
Images



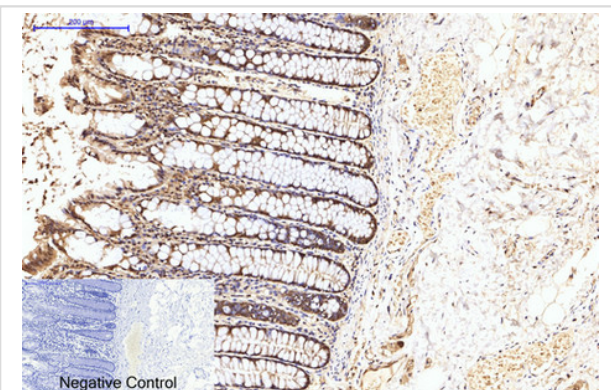
Western blot analysis of 1) 293T ,2) HeLa, 3) HepG2, 4) Mouse Brain tissue, 5) Rat Brain tissue, using #38072 diluted at 1:2,000.



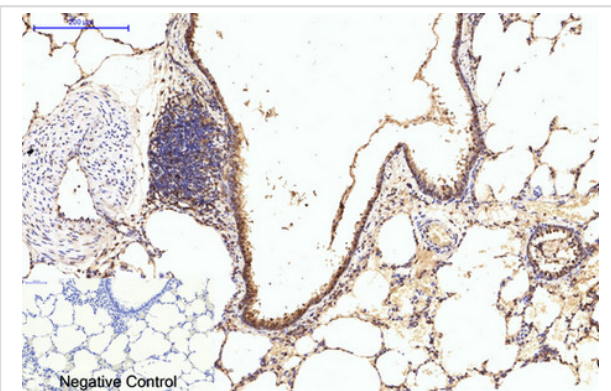
Immunofluorescence analysis of Mouse-spleen tissue. 1,eIF4A1 Monoclonal Antibody(M8)(red) was diluted at 1:200(4C,overnight). 2, Cy3 labled Secondary antibody was diluted at 1:300(room temperature, 50min).3, Picture B: DAPI(blue) 10min. Picture A:Target. Picture B: DAPI. Picture C: merge of A+B



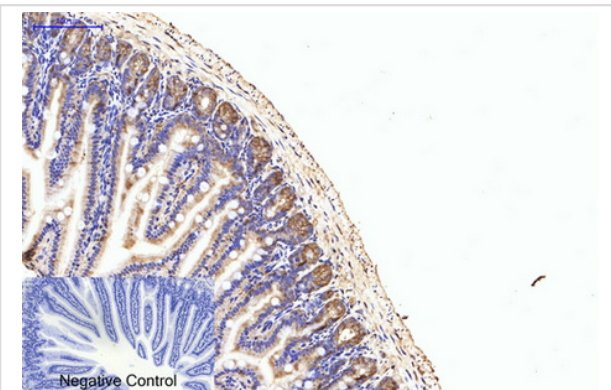
IF analysis of Hela with antibody (Left) and DAPI (Right) diluted at 1:100.



Immunohistochemical analysis of paraffin-embedded Human-colon-cancer tissue. 1,eIF4A1 Monoclonal Antibody(M8) was diluted at 1:200(4C,overnight). 2, Sodium citrate pH 6.0 was used for antibody retrieval(>98C,20min). 3,Secondary antibody was diluted at 1:200(room tempeRature, 30min). Negative control was used by secondary antibody only.



Immunohistochemical analysis of paraffin-embedded Rat-lung tissue. 1,eIF4A1 Monoclonal Antibody(M8) was diluted at 1:200(4C,overnight). 2, Sodium citrate pH 6.0 was used for antibody retrieval(>98C,20min). 3,Secondary antibody was diluted at 1:200(room tempeRature, 30min). Negative control was used by secondary antibody only.



Immunohistochemical analysis of paraffin-embedded Mouse-colon tissue. 1,eIF4A1 Monoclonal Antibody(M8) was diluted at 1:200(4C,overnight). 2, Sodium citrate pH 6.0 was used for antibody retrieval(>98C,20min). 3,Secondary antibody was diluted at 1:200(room tempeRature, 30min). Negative control was used by secondary antibody only.

Background

The eukaryotic initiation factor-4A (eIF4A) family consists of 3 closely related proteins EIF4A1, EIF4A2, and EIF4A3. These factors are required for the binding of mRNA to 40S ribosomal subunits. Eukaryotic initiation factor (eIF) complex 2 forms a ternary complex with GTP and the initiator Met-tRNA^BC this process is regulated by guanine nucleotide exchange and phosphorylation and serves as the main regulatory element of the bottleneck of protein expression.

Note: This product is for in vitro research use only