

## MGC16169 antibody

Catalog No: #22274

Orders: [order@signalwayantibody.com](mailto:order@signalwayantibody.com)Support: [tech@signalwayantibody.com](mailto:tech@signalwayantibody.com)

## Description

Product Name	MGC16169 antibody
Host Species	Rabbit
Clonality	Polyclonal
Purification	Purified by antigen-affinity chromatography.
Applications	WB IHC IF
Species Reactivity	Hu
Immunogen Type	Recombinant protein
Immunogen Description	Recombinant protein fragment contain a sequence corresponding to a region within amino acids 394 and 601 of Human MGC16169
Target Name	MGC16169
Accession No.	Swiss-Prot:Q8TEA7Gene ID:93627
Uniprot	Q8TEA7
GeneID	93627;
Concentration	0.4mg/ml
Formulation	Supplied in 0.1M Tris-buffered saline with 10% Glycerol (pH7.0). 0.01% Thimerosal was added as a preservative.
Storage	Store at -20°C for long term preservation (recommended). Store at 4°C for short term use.

## Application Details

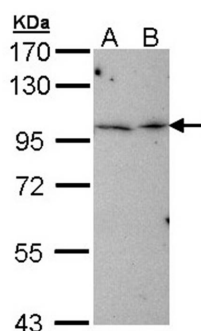
Predicted MW: 94kd

Western blotting: 1:500-1:3000

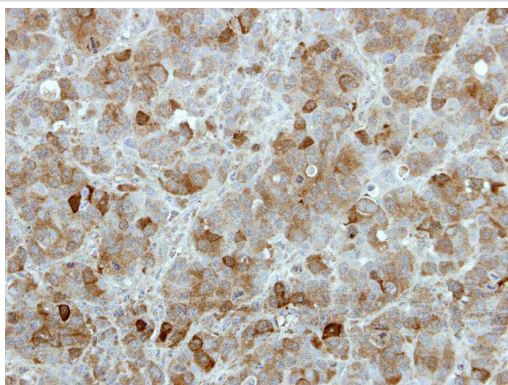
Immunohistochemistry: 1:100-1:250

Immunofluorescence: 1:100-1:200

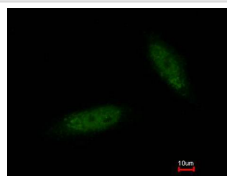
## Images



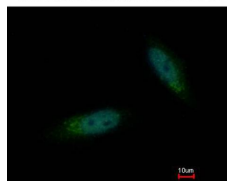
Sample (30 ug of whole cell lysate)  
A: Hep G2  
B: Molt-4  
7.5% SDS PAGE  
Primary antibody diluted at 1: 1000



Immunohistochemical analysis of paraffin-embedded MCF7 xenograft, using TBCK antibody at 1: 100 dilution.



Costained with Hoechst 33342



Immunofluorescence analysis of paraformaldehyde-fixed HeLa, using TBCK antibody at 1: 200 dilution.

---

Note: This product is for in vitro research use only