

AMACR/P504S Mouse Monoclonal Antibody

Catalog No: #37999

Orders: order@signalwayantibody.comSupport: tech@signalwayantibody.com

Description

Product Name	AMACR/P504S Mouse Monoclonal Antibody
Host Species	Mouse
Clonality	Monoclonal
Clone No.	4A12
Purification	Affinity purification using immunogen.
Applications	WB,IHC,IF
Species Reactivity	Hu
Specificity	AMACR/P504S Mouse Monoclonal antibody detects endogenous AMCAR/P504S proteins.
Target Name	AMACR/P504S
Other Names	2-methylacyl-CoA racemase; Alpha-methylacyl-CoA racemase; AMACR; CBAS4; RACE
Accession No.	Swiss-Prot#:Q9UHK6
Uniprot	Q9UHK6
GeneID	23600;
SDS-PAGE MW	42kd
Concentration	1.0mg/ml
Formulation	Mouse IgG1 in phosphate buffered saline (without Mg2+ and Ca2+), pH 7.4, 150mM NaCl, 0.02% sodium azide and 50% glycerol.
Storage	Store at -20°C

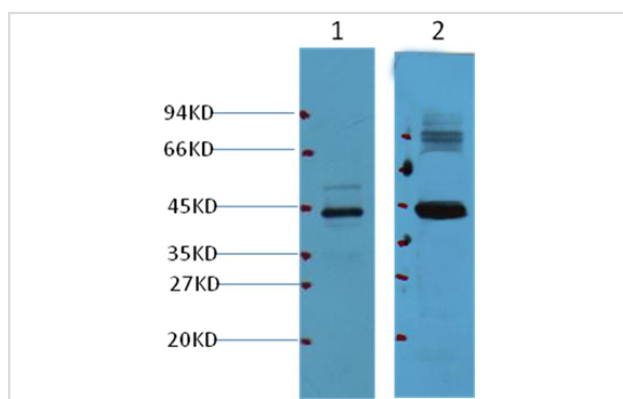
Application Details

WB dilution: 1:1000~1:2000

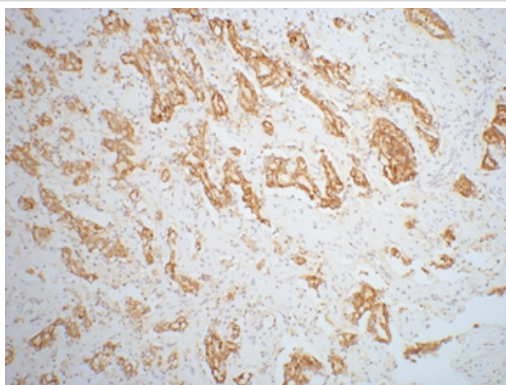
IHC dilution: 1:200

IF dilution:1:200

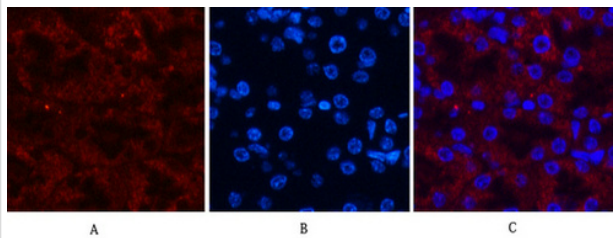
Images



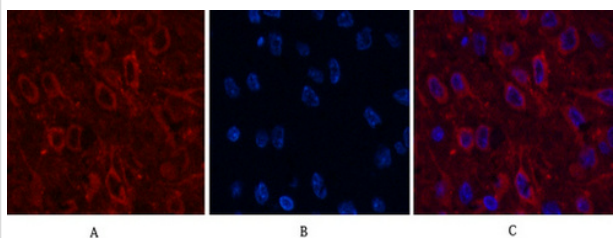
Western blot analysis of HepG2 cell lysate (lane 1) and mouse kidney (lane 2), using #37999 diluted at 1:1,000.



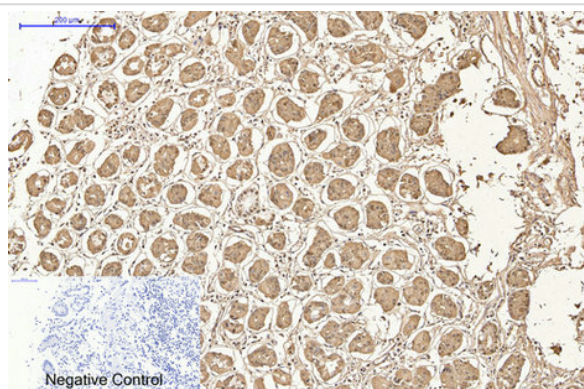
IHC staining of mouse prostate adenocarcinoma tissue with AMACR/P504S mouse mAb(4A12) diluted at 1:200.



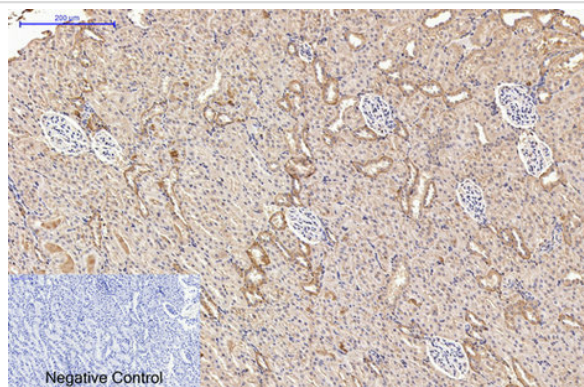
Immunofluorescence analysis of Mouse-kidney tissue. 1,AMACR Monoclonal Antibody(4A12)(red) was diluted at 1:200(4C,overnight). 2, Cy3 labeled Secondary antibody was diluted at 1:300(room temperature, 50min).3, Picture B: DAPI(blue) 10min. Picture A:Target. Picture B: DAPI. Picture C: merge of A+B



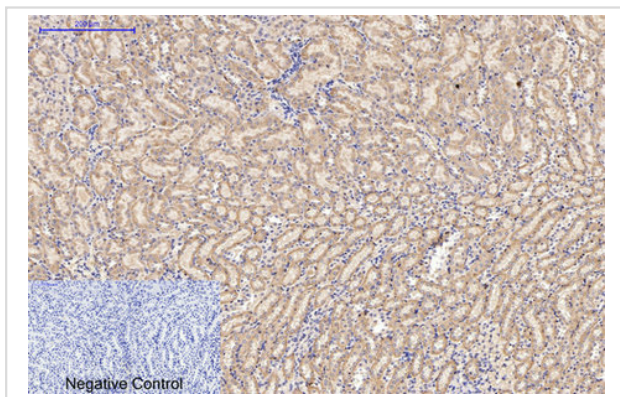
Immunofluorescence analysis of Rat-brain tissue. 1,AMACR Monoclonal Antibody(4A12)(red) was diluted at 1:200(4C,overnight). 2, Cy3 labeled Secondary antibody was diluted at 1:300(room temperature, 50min).3, Picture B: DAPI(blue) 10min. Picture A:Target. Picture B: DAPI. Picture C: merge of A+B



Immunohistochemical analysis of paraffin-embedded Human-stomach tissue. 1,AMACR Monoclonal Antibody(4A12) was diluted at 1:200(4C,overnight). 2, Sodium citrate pH 6.0 was used for antibody retrieval(>98C,20min). 3,Secondary antibody was diluted at 1:200(room temperature, 30min). Negative control was used by secondary antibody only.



Immunohistochemical analysis of paraffin-embedded Rat-kidney tissue. 1,AMACR Monoclonal Antibody(4A12) was diluted at 1:200(4C,overnight). 2, Sodium citrate pH 6.0 was used for antibody retrieval(>98C,20min). 3,Secondary antibody was diluted at 1:200(room temperature, 30min). Negative control was used by secondary antibody only.



Immunohistochemical analysis of paraffin-embedded Mouse-kidney tissue. 1,AMACR Monoclonal Antibody(4A12) was diluted at 1:200(4C,overnight). 2, Sodium citrate pH 6.0 was used for antibody retrieval(>98C,20min). 3,Secondary antibody was diluted at 1:200(room tempeRature, 30min). Negative control was used by secondary antibody only.

Background

AMACR has been recently described as prostate cancer-specific gene that encodes a protein involved in the beta-oxidation of branched chain fatty acids. Expression of AMACR protein is found in prostatic adenocarcinoma but not in benign prostatic tissue. It stains premalignant lesions of prostate: high-grade prostatic intraepithelial neoplasia (PIN) and atypical adenomatous hyperplasia.

Note: This product is for in vitro research use only