

CD21 Mouse Monoclonal Antibody

Catalog No: #38015

Orders: order@signalwayantibody.comSupport: tech@signalwayantibody.com

Description

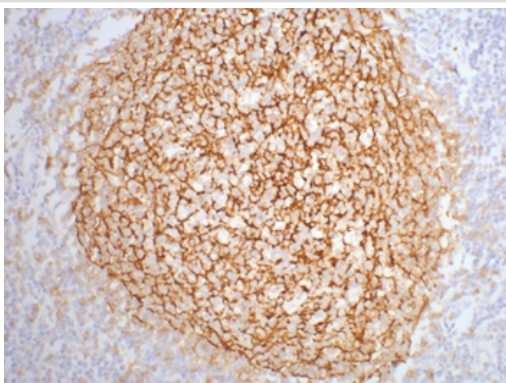
Product Name	CD21 Mouse Monoclonal Antibody
Host Species	Mouse
Clonality	Monoclonal
Clone No.	2C5
Purification	The antibody was affinity-purified from mouse ascites by affinity-chromatography using specific immunogen.
Applications	IHC,IF
Species Reactivity	Hu Ms Rt
Specificity	The CD21 antibody detects endogenous CD21 proteins.
Target Name	CD21
Other Names	C3DR; CD21; Complement C3d receptor; complement component (3d/Epstein Barr virus) receptor 2
Accession No.	Swiss-Prot#:P20023
Uniprot	P20023
GeneID	1380;
SDS-PAGE MW	113kd
Concentration	1.0mg/ml
Formulation	PBS, pH 7.4, containing 0.5%BSA, 0.02% sodium azide as Preservative and 50% Glycerol.
Storage	Store at -20°C

Application Details

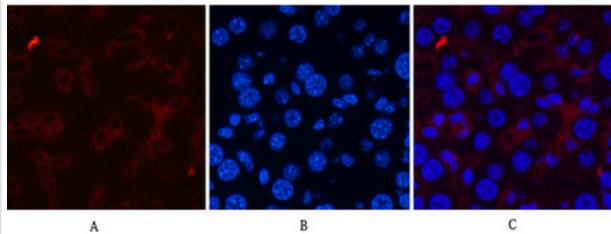
IHC dilution: 1:200

IF dilution:1:50-200

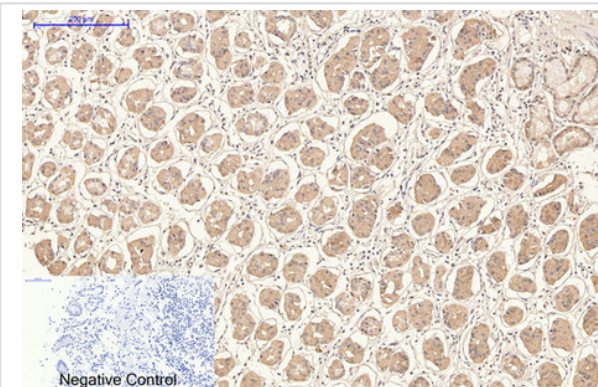
Images



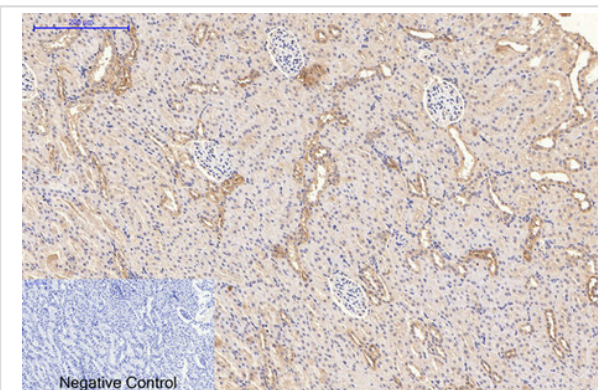
IHC staining of human tonsil tissue with CD21 mouse mAb(2C5) diluted at 1:200.



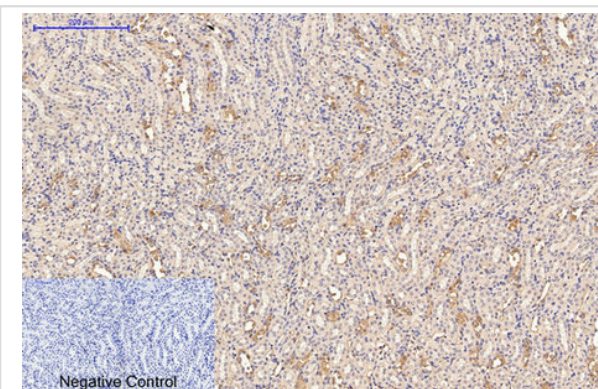
Immunofluorescence analysis of Mouse-liver tissue. 1,CD21 Monoclonal Antibody(2C5)(red) was diluted at 1:200(4C,overnight). 2, Cy3 labeled Secondary antibody was diluted at 1:300(room temperature, 50min).3, Picture B: DAPI(blue) 10min. Picture A:Target. Picture B: DAPI. Picture C: merge of A+B



Immunohistochemical analysis of paraffin-embedded Human-stomach tissue. 1,CD21 Monoclonal Antibody(2C5) was diluted at 1:200(4C,overnight). 2, Sodium citrate pH 6.0 was used for antibody retrieval(>98C,20min). 3,Secondary antibody was diluted at 1:200(room temperature, 30min). Negative control was used by secondary antibody only.



Immunohistochemical analysis of paraffin-embedded Rat-kidney tissue. 1,CD21 Monoclonal Antibody(2C5) was diluted at 1:200(4C,overnight). 2, Sodium citrate pH 6.0 was used for antibody retrieval(>98C,20min). 3,Secondary antibody was diluted at 1:200(room temperature, 30min). Negative control was used by secondary antibody only.



Immunohistochemical analysis of paraffin-embedded Mouse-kidney tissue. 1,CD21 Monoclonal Antibody(2C5) was diluted at 1:200(4C,overnight). 2, Sodium citrate pH 6.0 was used for antibody retrieval(>98C,20min). 3,Secondary antibody was diluted at 1:200(room temperature, 30min). Negative control was used by secondary antibody only.

Background

This gene encodes a membrane protein, which functions as a receptor for Epstein-Barr virus (EBV) binding on B and T lymphocytes. Genetic variations in this gene are associated with susceptibility to systemic lupus erythematosus type 9 (SLEB9). Alternatively spliced transcript variants encoding different isoforms have been found for this gene.[provided by RefSeq, Sep 2009],

Note: This product is for in vitro research use only