

Cyclooxygenase 1 Rabbit Polyclonal Antibody

Catalog No: #38023

Orders: order@signalwayantibody.comSupport: tech@signalwayantibody.com

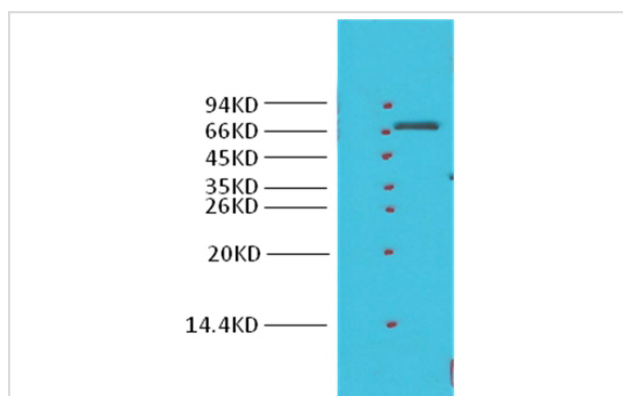
Description

| | |
|--------------------|--|
| Product Name | Cyclooxygenase 1 Rabbit Polyclonal Antibody |
| Host Species | Rabbit |
| Clonality | Polyclonal |
| Purification | Affinity purification using immunogen. |
| Applications | WB |
| Species Reactivity | Hu |
| Specificity | The COX1 Rabbit Polyclonal antibody detects endogenous COX1 proteins. |
| Target Name | Cyclooxygenase 1 |
| Other Names | COX-1; COX1; cyclooxygenase-1; Cyclooxygenase-1; PCOX1; PGG/HS; PGH synthase 1; PGH1; PGHS-1; PGHS1; PHS 1 |
| Accession No. | Swiss-Prot#:P23219 |
| Uniprot | P23219 |
| GeneID | 5742; |
| SDS-PAGE MW | 65kd |
| Concentration | 1.0mg/ml |
| Formulation | IgG1 in phosphate buffered saline (without Mg ²⁺ and Ca ²⁺), pH 7.4, 150mM NaCl, 0.02% sodium azide and 50% glycerol. |
| Storage | Store at -20°C |

Application Details

Western blotting: 1:1000

Images



Western blot analysis of Hela cells, using #38023 diluted at 1:1,000.

Background

Cyclooxygenase-1 (COX-1), also known as prostaglandin G/H synthase 1, prostaglandin-endoperoxide synthase 1 or prostaglandin H2 synthase 1, is an enzyme that in humans is encoded by the PTGS1 gene. There are two isozymes of COX encoded by distinct gene products: a constitutive COX-1

(this enzyme) and an inducible COX-2, which differ in their regulation of expression and tissue distribution. The expression of these two transcripts is differentially regulated by relevant cytokines and growth factors. A splice variant of COX-1 termed COX-3 was identified in the CNS of dogs, but does not result in a functional protein in humans. Two smaller COX-1-derived proteins (the partial COX-1 proteins PCOX-1A and PCOX-1B) have also been discovered, but their precise roles are yet to be described

Note: This product is for in vitro research use only