

EFHD1 Mouse Monoclonal Antibody

Catalog No: #38043

Orders: order@signalwayantibody.comSupport: tech@signalwayantibody.com

Description

Product Name	EFHD1 Mouse Monoclonal Antibody
Host Species	Mouse
Clonality	Monoclonal
Purification	Affinity purification using immunogen.
Applications	WB,IHC,IF
Species Reactivity	Hu Rt Ms
Specificity	EFHD1 Mouse Monoclonal antibody detects endogenous EFHD1 protein.s
Target Name	EFHD1
Other Names	DKFZp781H0842; EF hand domain containing 1; EF hand domain family, member D1; EF-hand domain family, member D1
Accession No.	Swiss-Prot#:Q9BUP0
Uniprot	Q9BUP0
GeneID	80303;
SDS-PAGE MW	26kd
Concentration	1.0mg/ml
Formulation	Mouse IgG1 in phosphate buffered saline (without Mg ²⁺ and Ca ²⁺), pH 7.4, 150mM NaCl, 0.02% sodium azide and 50% glycerol.
Storage	Store at -20°C

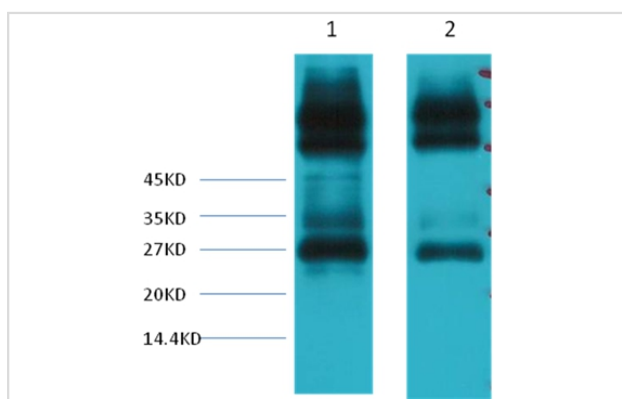
Application Details

WB dilution: 1:1000~1:3000

IF dilution: 1:100-200

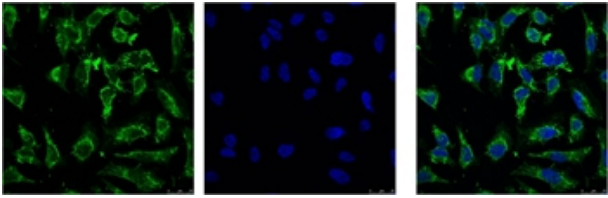
IHC dilution:1:50-300

Images

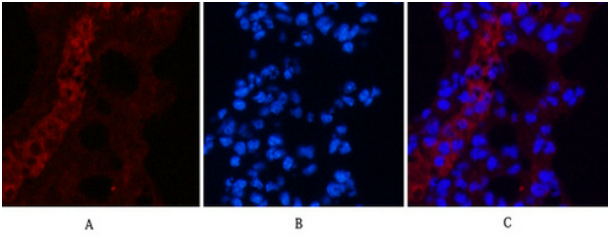


Western blot analysis of 1) Mouse spleen tissue, 2) Rat spleen tissue, using #38043 diluted at 1:3,000.

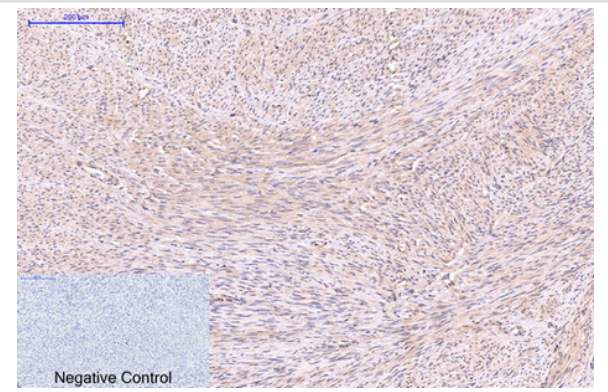
IF analysis of Hela with #38043(Left) and DAPI (Right) diluted at 1:100.



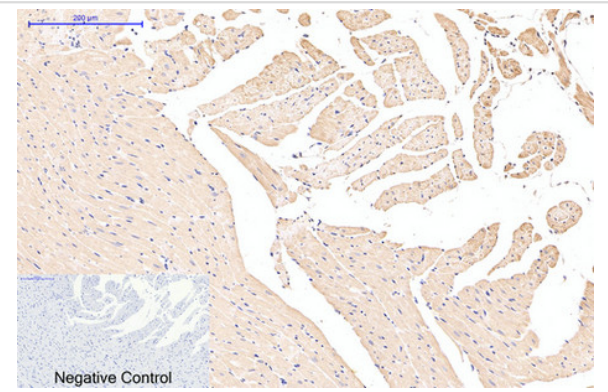
Immunofluorescence analysis of Mouse-lung tissue. 1, EFHD1 Monoclonal Antibody(3G2)(red) was diluted at 1:200(4C, overnight). 2, Cy3 labeled Secondary antibody was diluted at 1:300(room temperature, 50min). 3, Picture B: DAPI(blue) 10min. Picture A: Target. Picture C: merge of A+B



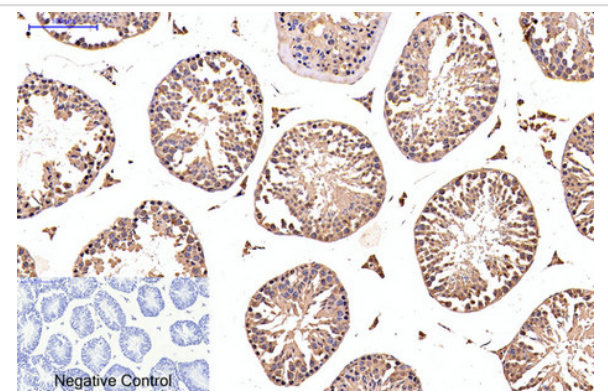
Immunohistochemical analysis of paraffin-embedded Human-uterus tissue. 1, EFHD1 Monoclonal Antibody(3G2) was diluted at 1:200(4C, overnight). 2, Sodium citrate pH 6.0 was used for antibody retrieval(>98C, 20min). 3, Secondary antibody was diluted at 1:200(room temperature, 30min). Negative control was used by secondary antibody only.



Immunohistochemical analysis of paraffin-embedded Rat-heart tissue. 1, EFHD1 Monoclonal Antibody(3G2) was diluted at 1:200(4C, overnight). 2, Sodium citrate pH 6.0 was used for antibody retrieval(>98C, 20min). 3, Secondary antibody was diluted at 1:200(room temperature, 30min). Negative control was used by secondary antibody only.



Immunohistochemical analysis of paraffin-embedded Mouse-testis tissue. 1, EFHD1 Monoclonal Antibody(3G2) was diluted at 1:200(4C, overnight). 2, Sodium citrate pH 6.0 was used for antibody retrieval(>98C, 20min). 3, Secondary antibody was diluted at 1:200(room temperature, 30min). Negative control was used by secondary antibody only.



Background

EFHD1 is an EF-hand domain-containing protein that displays increased expression during neuronal differentiation

Note: This product is for in vitro research use only