

## EGFR(Phospho-Tyr1092) Antibody

Catalog No: #11081



Package Size: #11081-1 50ul #11081-2 100ul

Orders: [order@signalwayantibody.com](mailto:order@signalwayantibody.com)Support: [tech@signalwayantibody.com](mailto:tech@signalwayantibody.com)

## Description

|                       |   |
|-----------------------|---|
| Product Name          | EGFR(Phospho-Tyr1092) Antibody  |
| Host Species          | Rabbit  |
| Clonality             | Polyclonal  |
| Purification          | Antibodies were produced by immunizing rabbits with synthetic phosphopeptide and KLH conjugates.<br>Antibodies were purified by affinity-chromatography using epitope-specific phosphopeptide. Non-phospho specific antibodies were removed by chromatography using non-phosphopeptide. |
| Applications          | WB IHC  |
| Species Reactivity    | Hu Rt   |
| Specificity           | The antibody detects endogenous level of EGFR only when phosphorylated at tyrosine 1092.  |
| Immunogen Type        | Peptide-KLH   |
| Immunogen Description | Peptide sequence around phosphorylation site of tyrosine1092 (P-E-Y(p)-I-N) derived from Human EGFR.  |
| Target Name           | EGFR  |
| Modification          | Phospho   |
| Other Names           | ERBB1; Receptor protein-tyrosine kinase ErbB-1; kinase EGFR   |
| Accession No.         | Swiss-Prot: P00533NCBI Protein: NP_005219.2   |
| Uniprot               | P00533  |
| GeneID                | 1956;   |
| Concentration         | 1.0mg/ml  |
| Formulation           | Supplied at 1.0mg/mL in phosphate buffered saline (without Mg <sup>2+</sup> and Ca <sup>2+</sup> ), pH 7.4, 150mM NaCl, 0.02% sodium azide and 50% glycerol.  |
| Storage               | Store at -20°C for long term preservation (recommended). Store at 4°C for short term use.   |

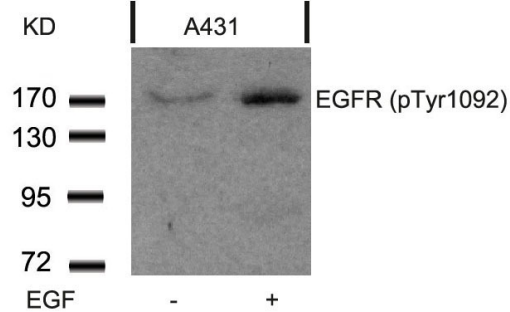
## Application Details

Predicted MW: 175kd

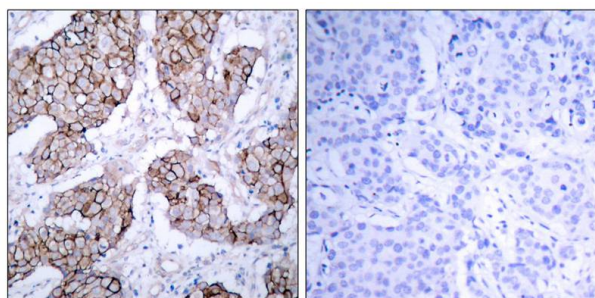
Western blotting: 1:500~1:1000

Immunohistochemistry: 1:50~1:100

## Images



Western blot analysis of extracts from A431 cells untreated or treated with EGF using EGFR(Phospho-Tyr1092) Antibody #11081.



Immunohistochemical analysis of paraffin-embedded human breast carcinoma tissue using EGFR(Phospho-Tyr1092) Antibody #11081(left) or the same antibody preincubated with blocking peptide(right).

## Background

Receptor for EGF, but also for other members of the EGF family, as TGF- $\alpha$ , amphiregulin, betacellulin, heparin-binding EGF-like growth factor, GP30 and vaccinia virus growth factor. Is involved in the control of cell growth and differentiation. Phosphorylates MUC1 in breast cancer cells and increases the interaction of MUC1 with SRC and CTNNB1/beta-catenin.

Buerger C, et al. (2003) J Biol Chem; 278(39): 37610-21.

Wang XQ, (2003) J Biol Chem; 278(49): 48770-8.

Saito T, et al. (2004) Endocrinology; 145(9): 4232-43.

Pao W, et al. (2004) Proc Natl Acad Sci U S A; 101(36): 13306-11.

Note: This product is for in vitro research use only